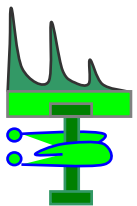
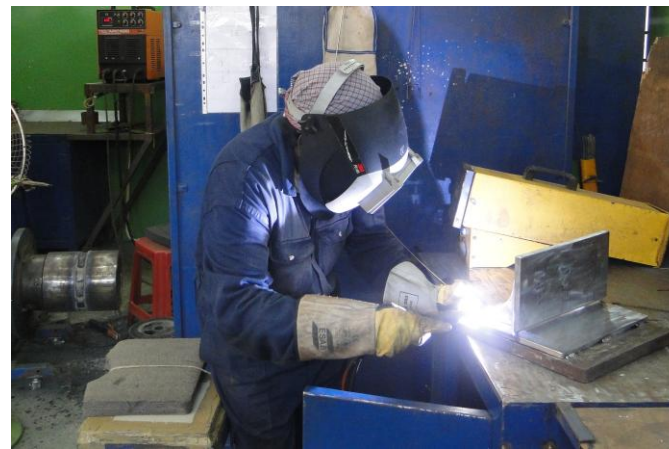
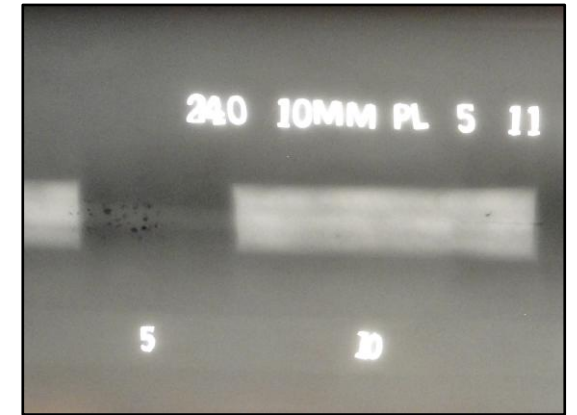
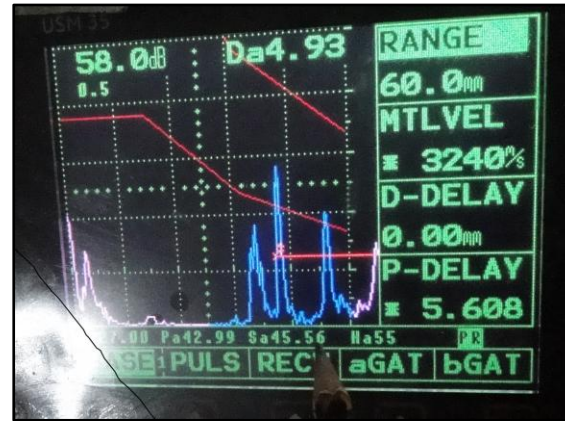
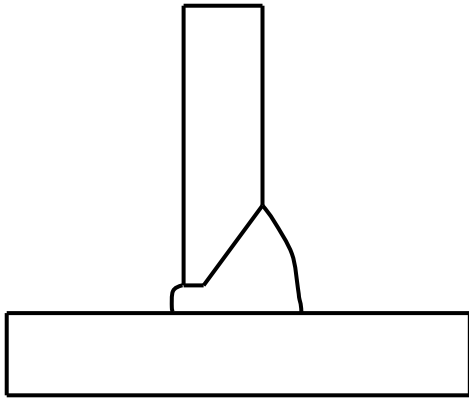


NDT Case Study



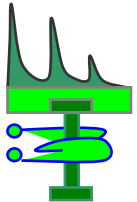
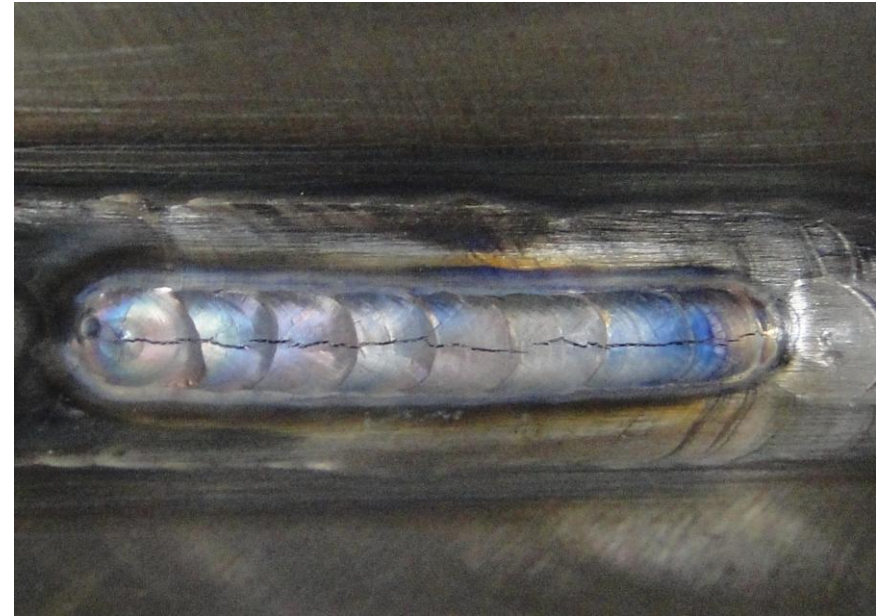
Presented by
R.Baskar
BIT Inspection Technology
BINDT's ATO / AQB

www.bitndtindia.com

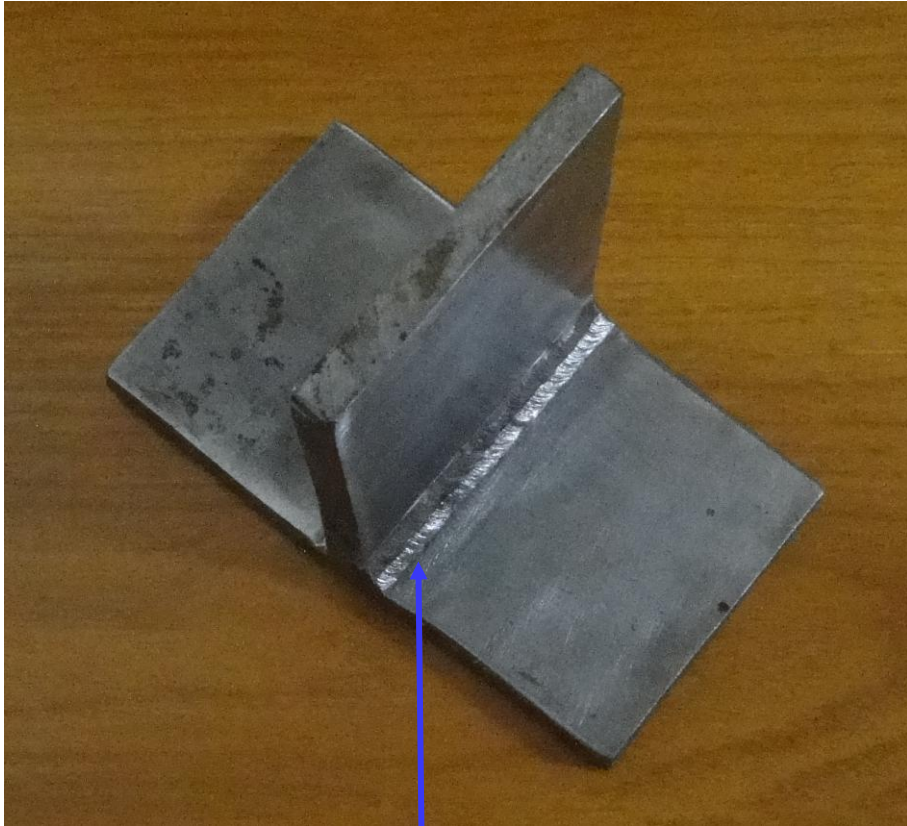
NDT Case Study



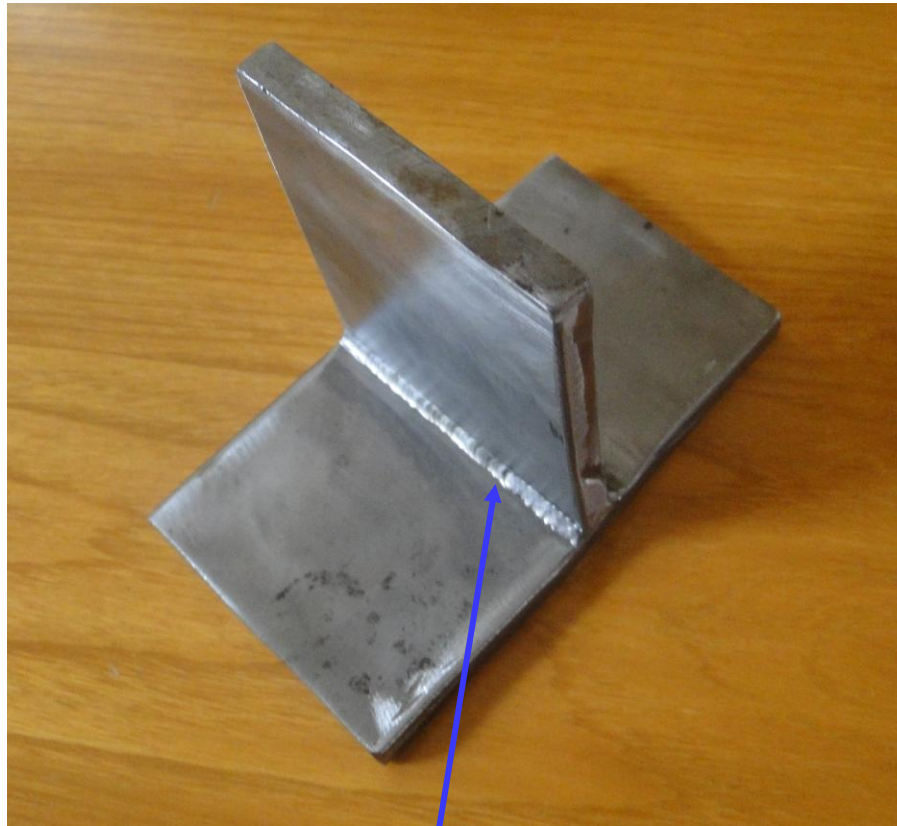
Flaw Specimen Manufacturing



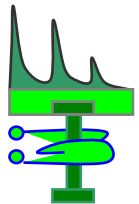
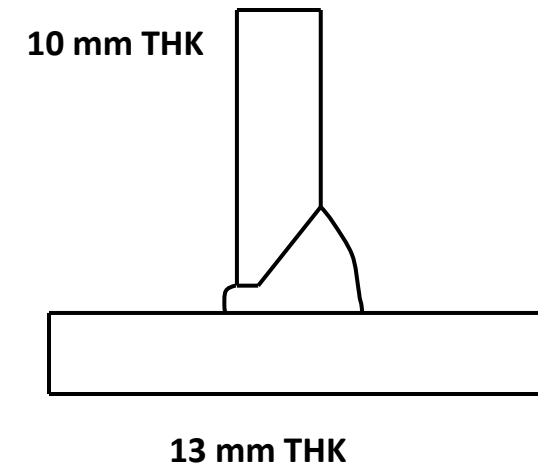
NDT Case Study



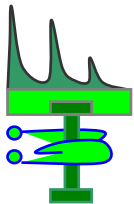
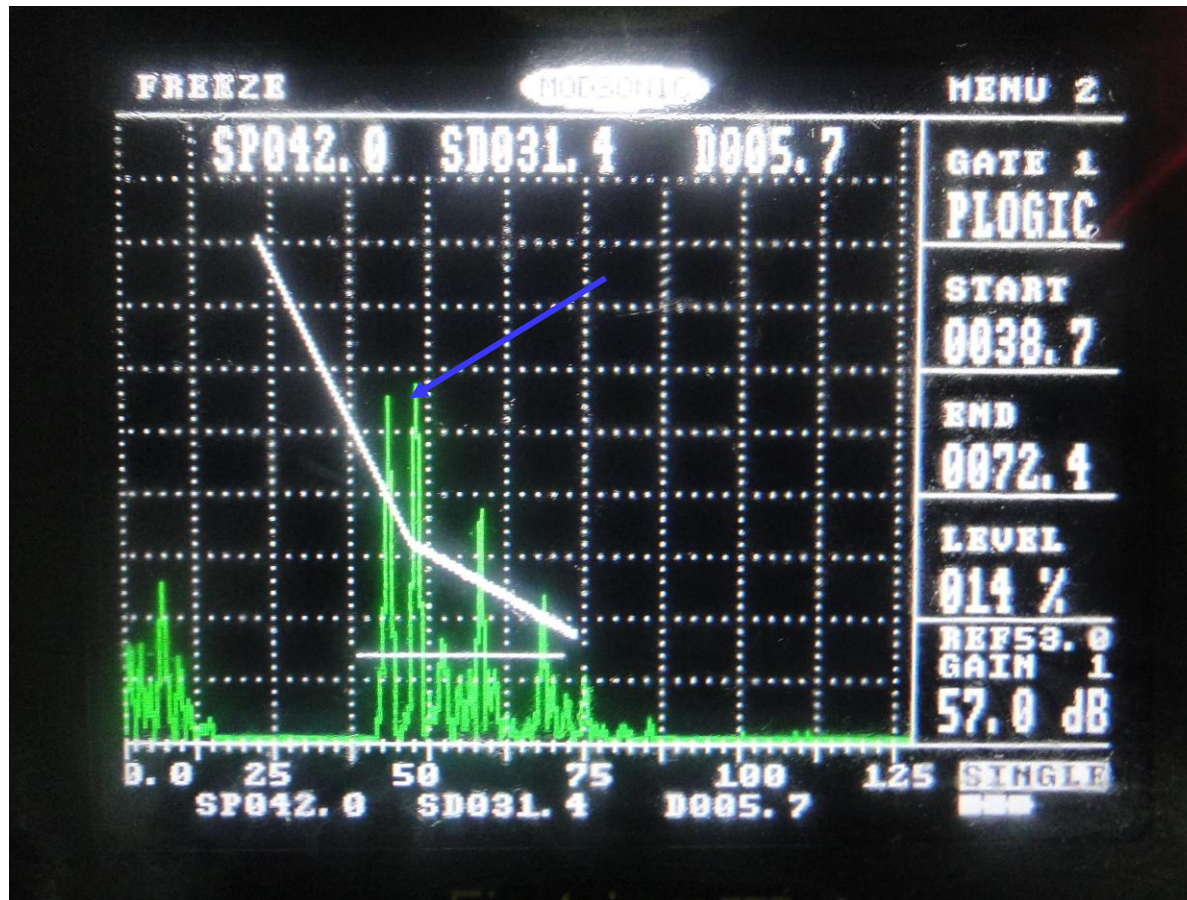
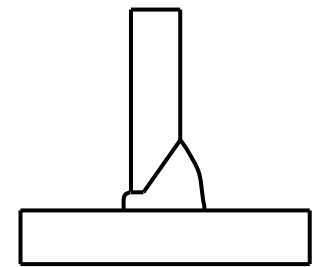
Cap



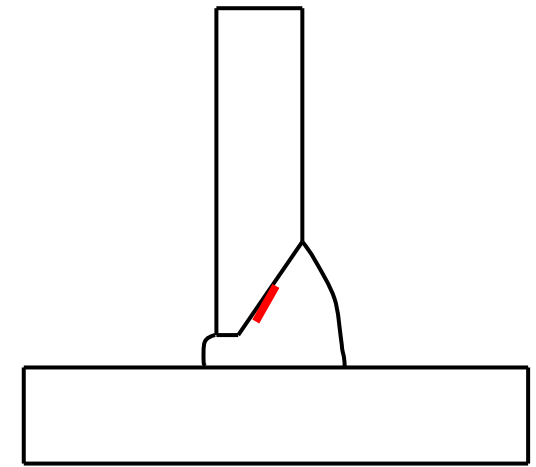
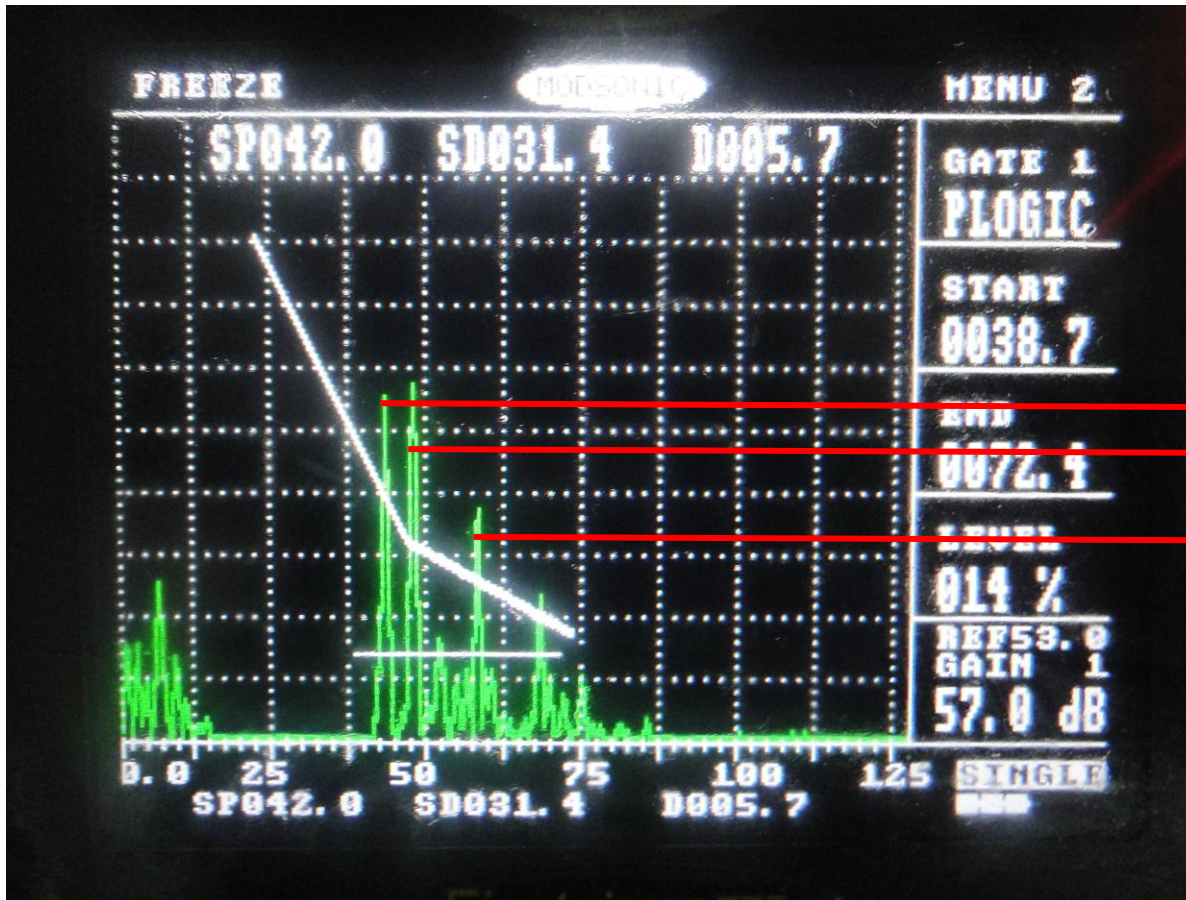
Root



NDT Case Study



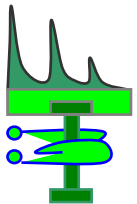
NDT Case Study



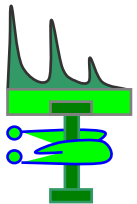
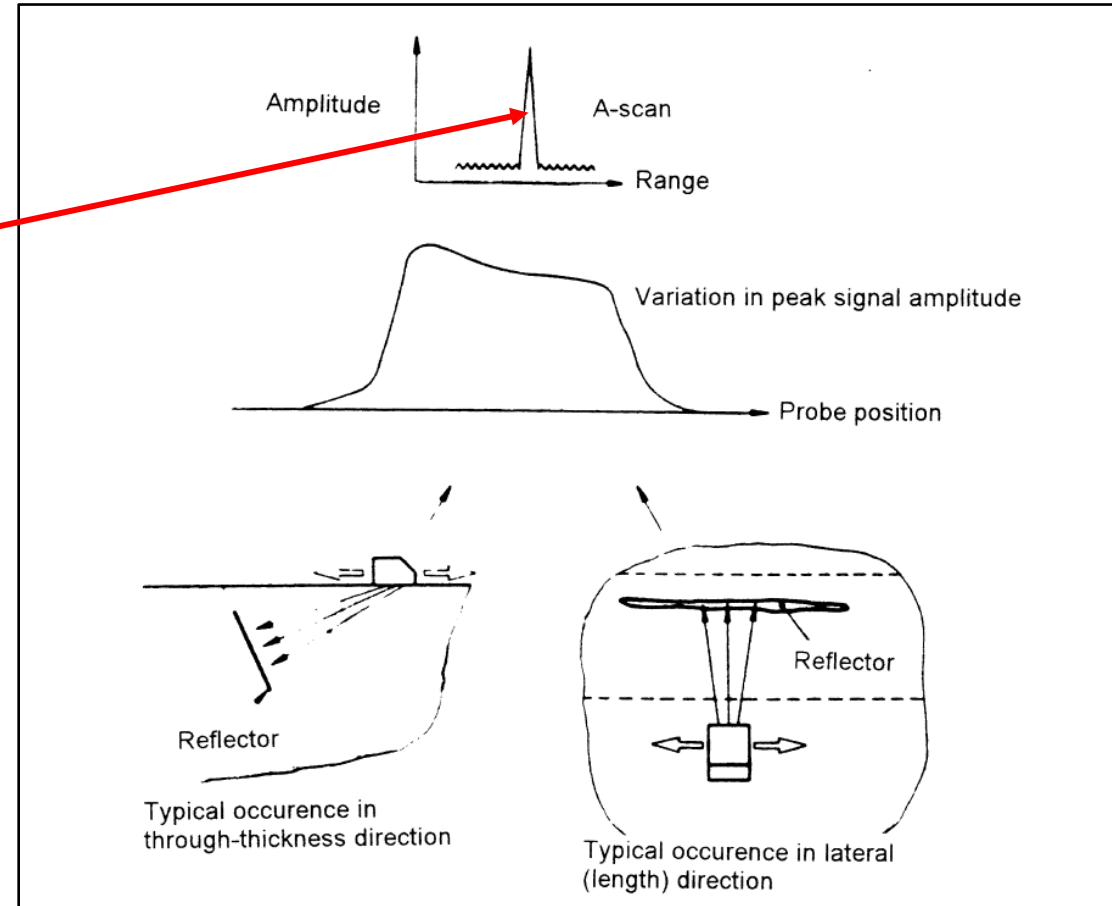
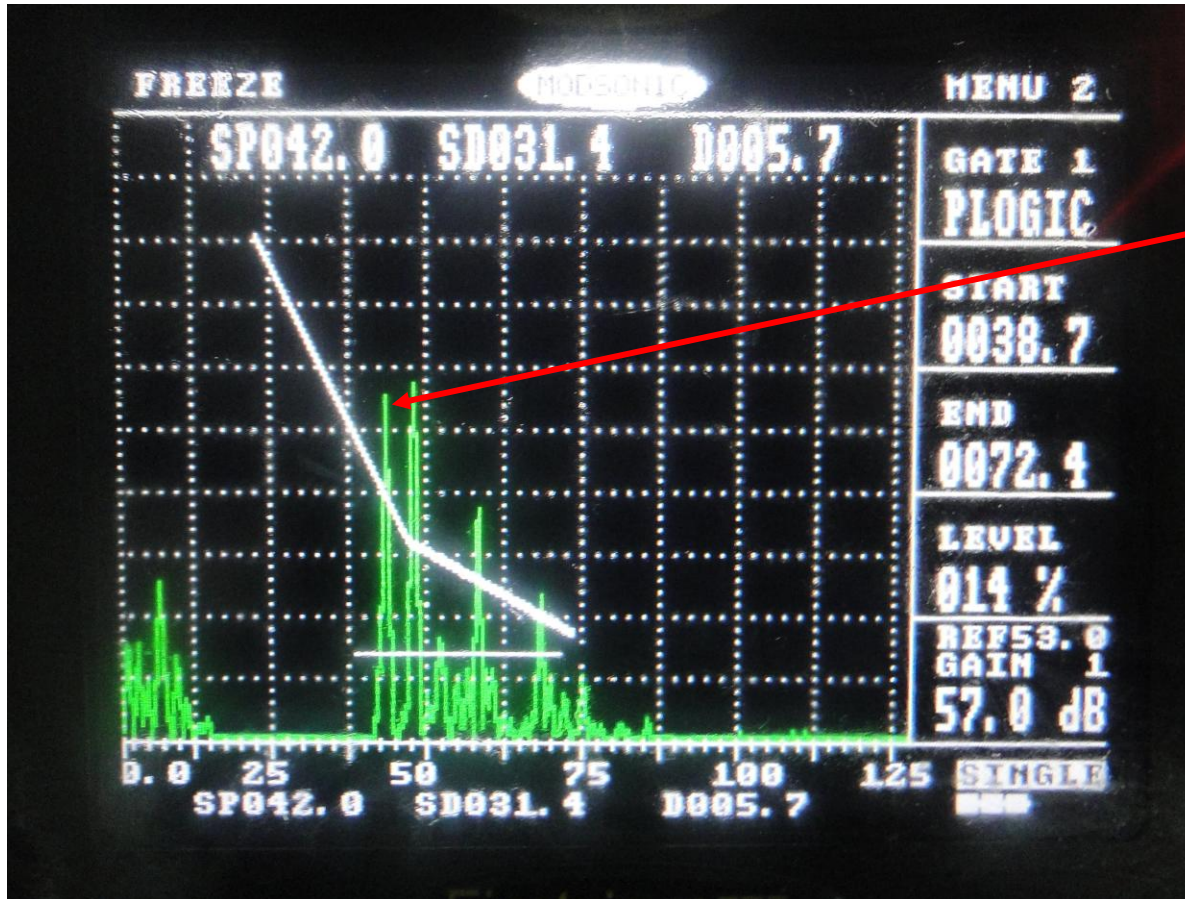
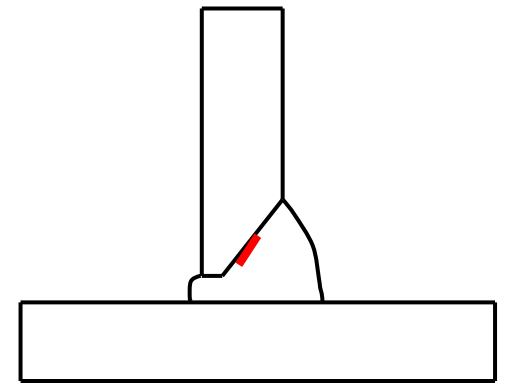
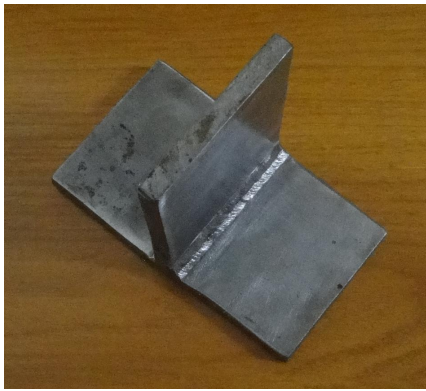
?

?

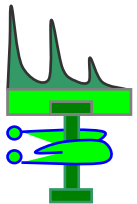
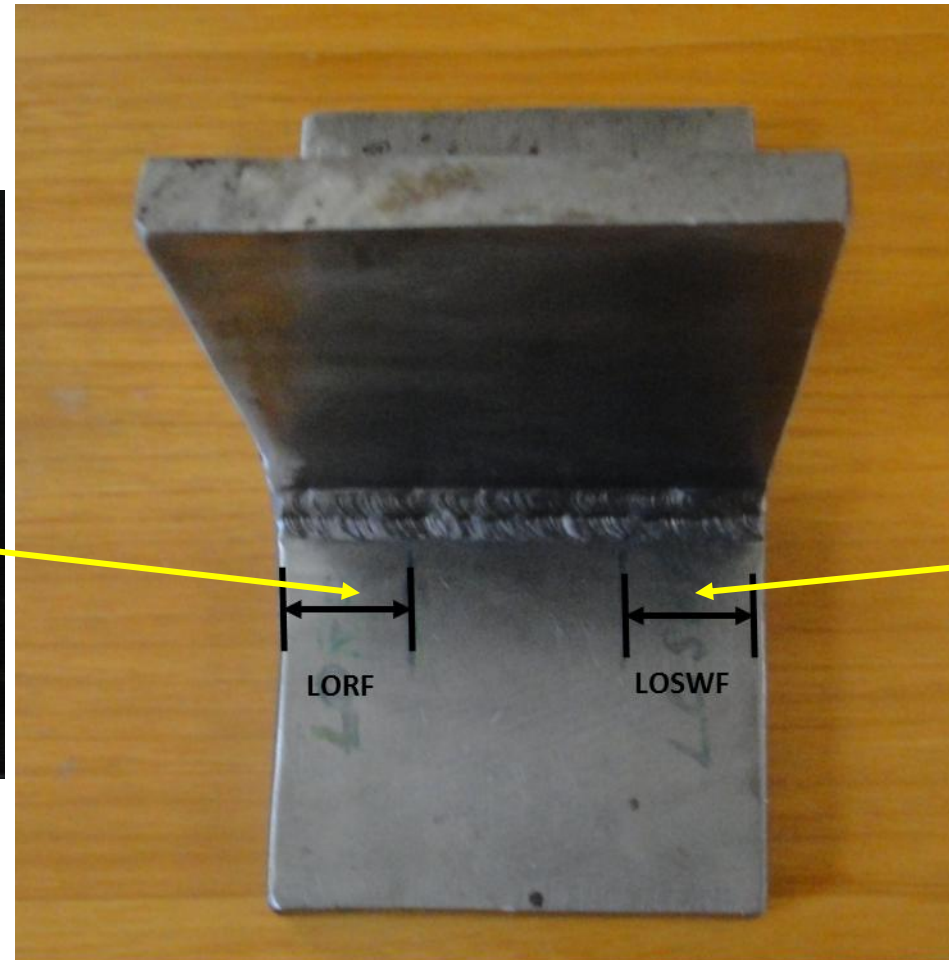
Back Wall Echo



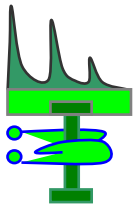
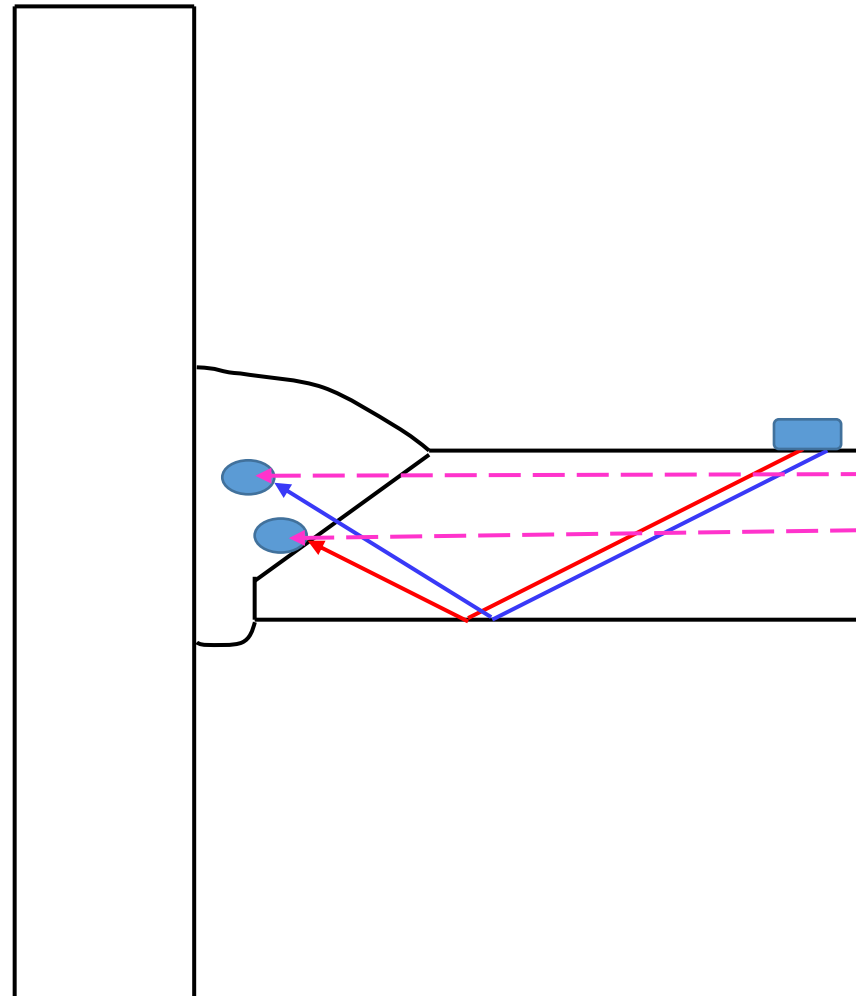
NDT Case Study



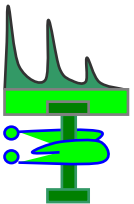
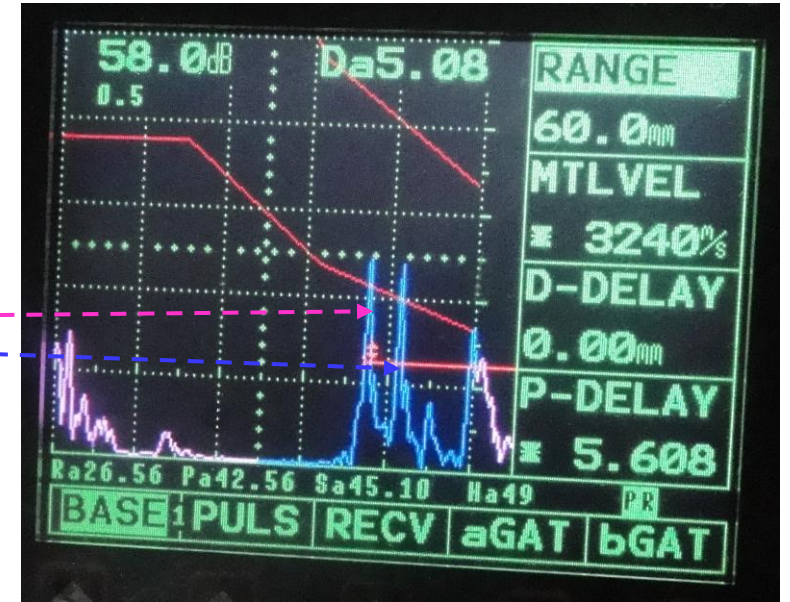
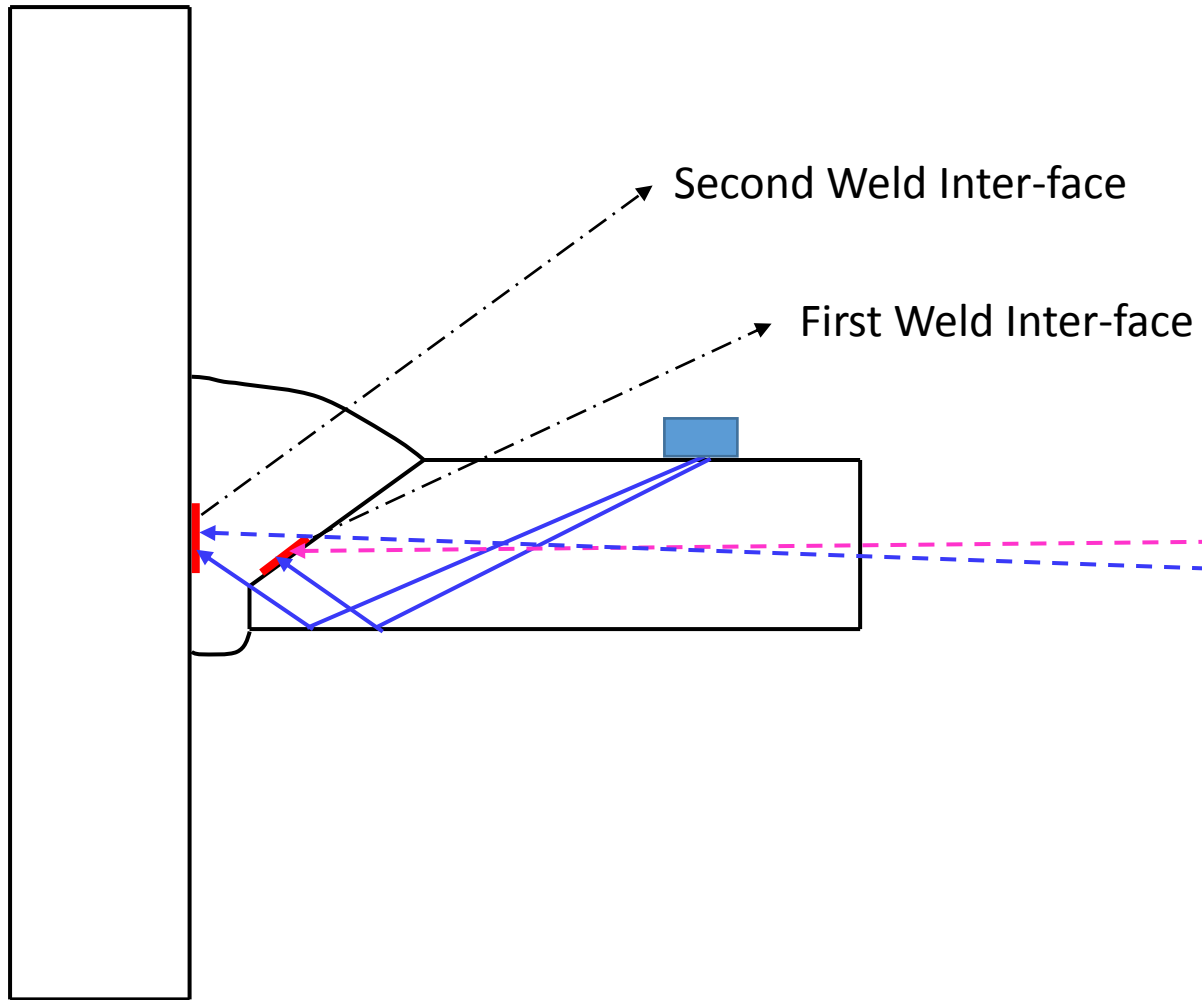
NDT Case Study



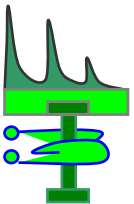
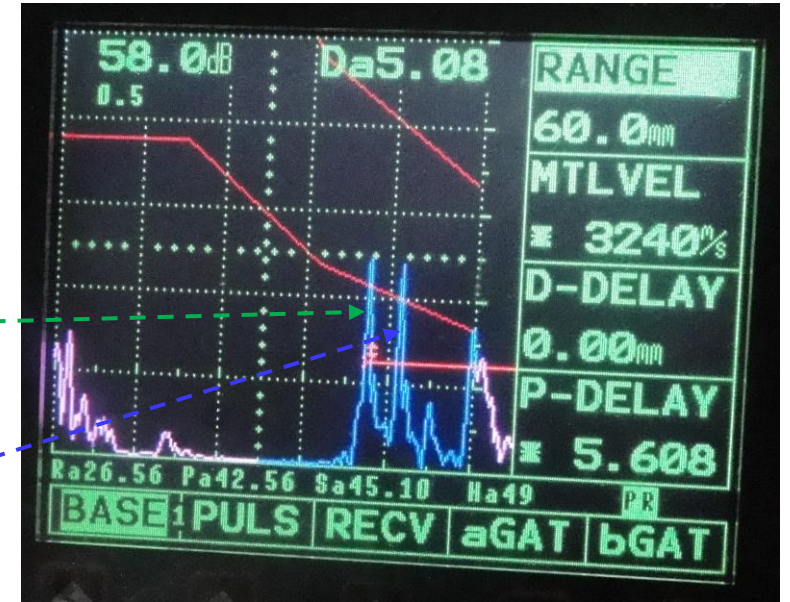
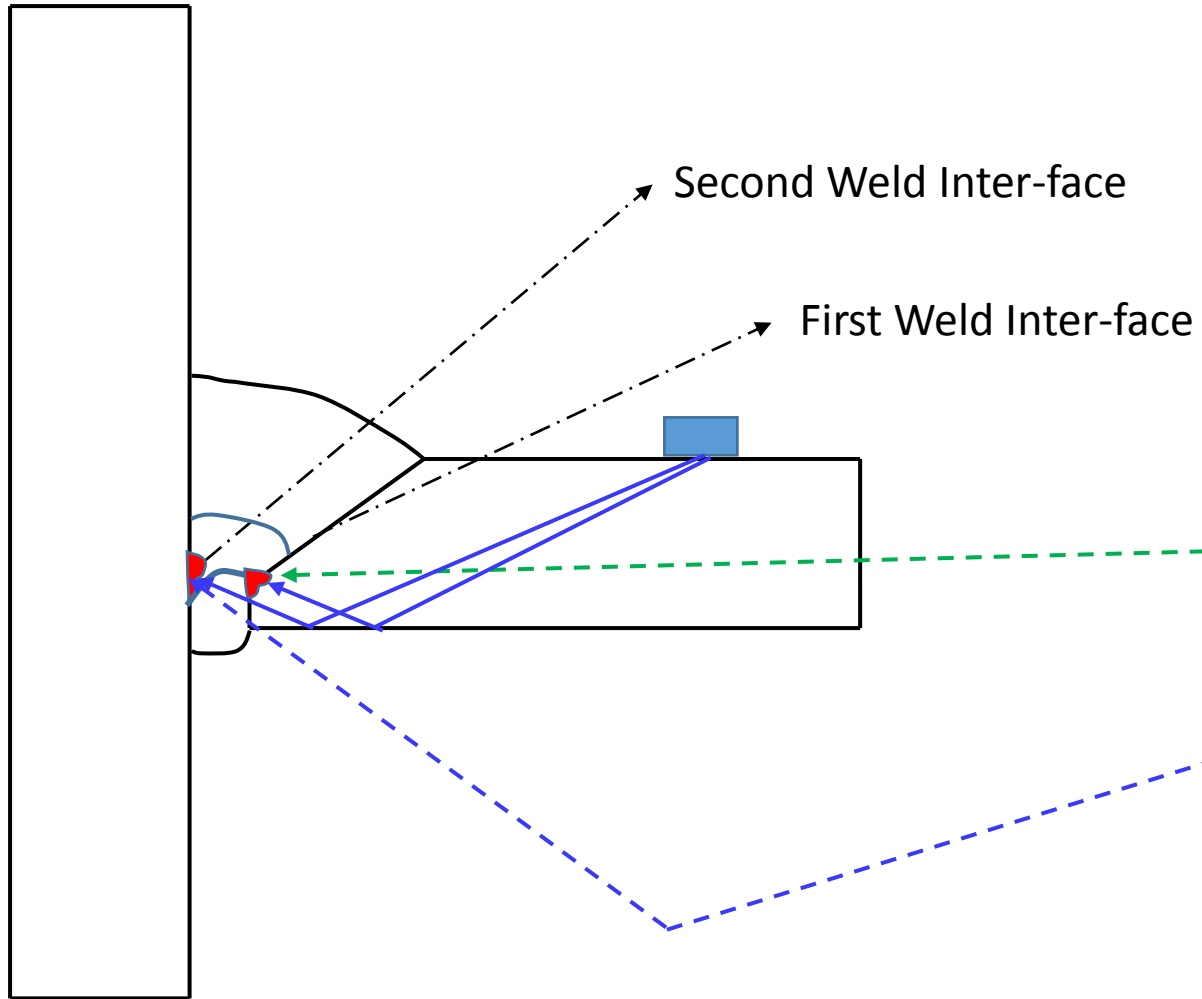
NDT Case Study



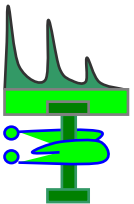
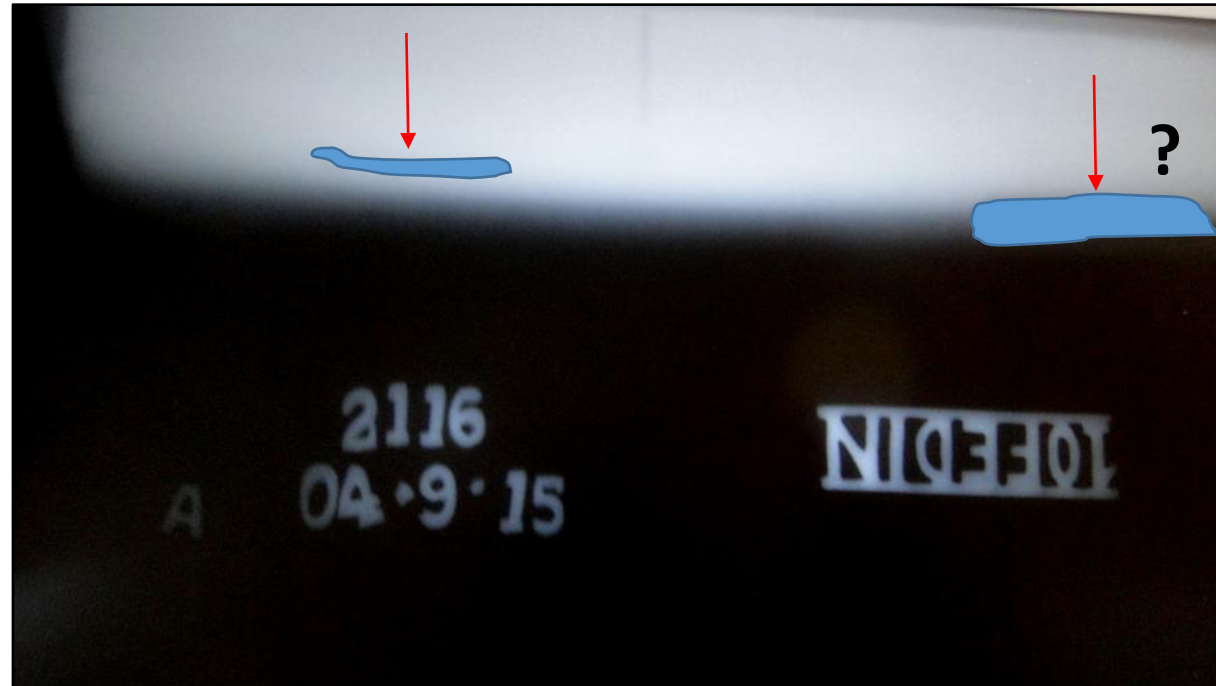
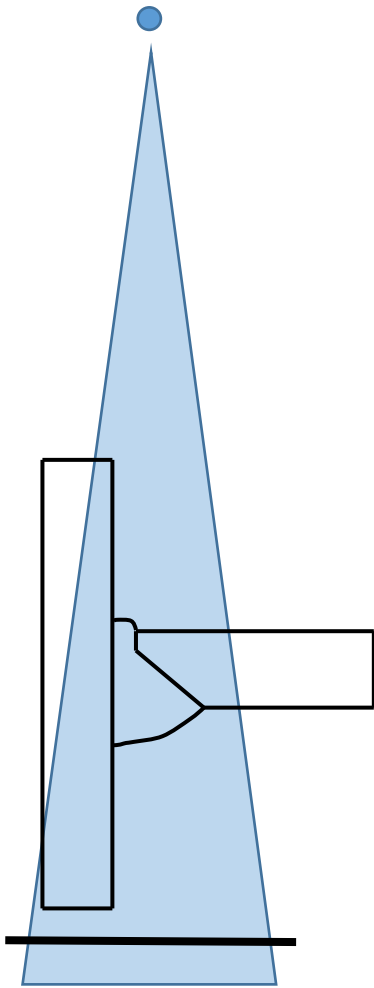
NDT Case Study



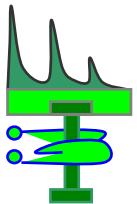
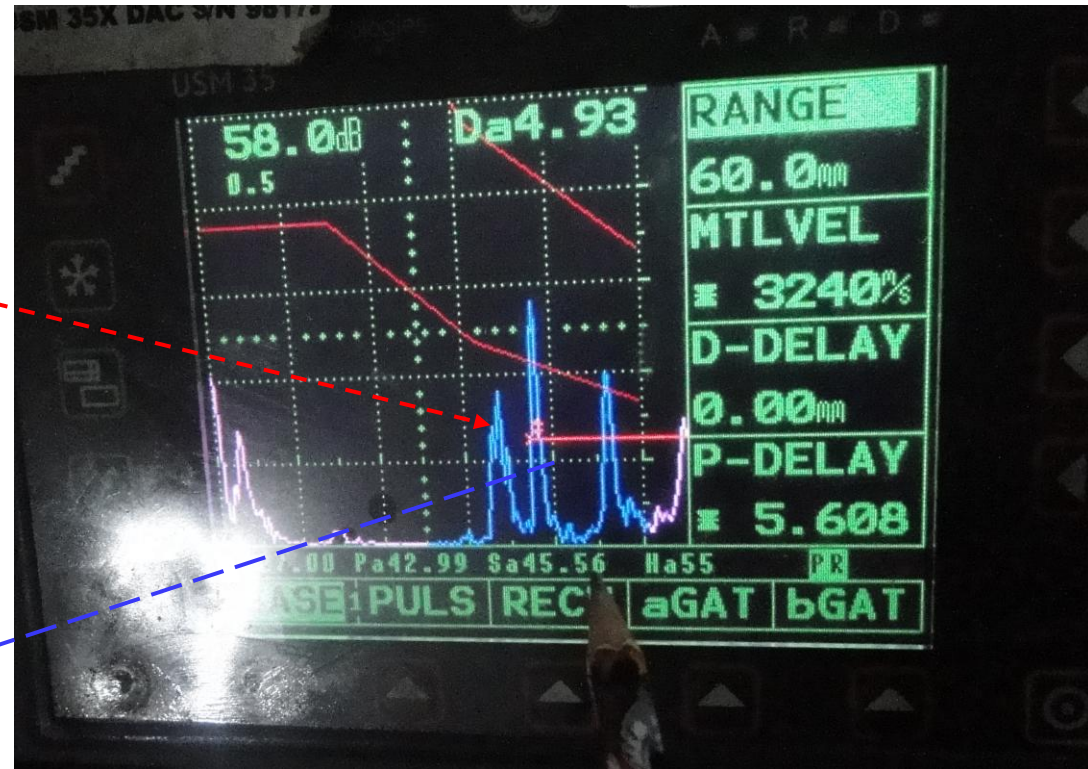
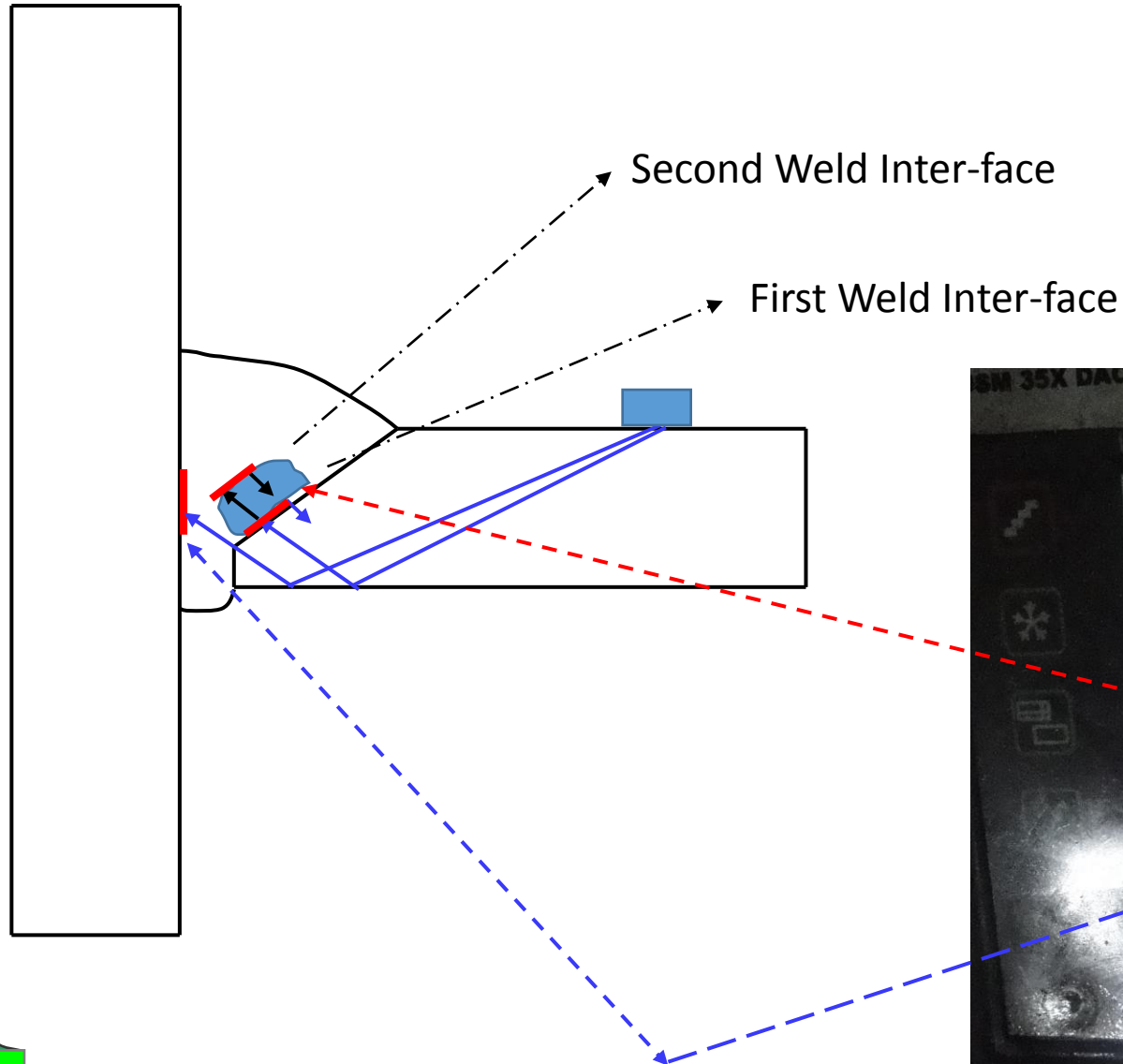
NDT Case Study



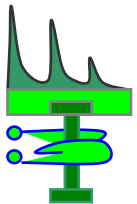
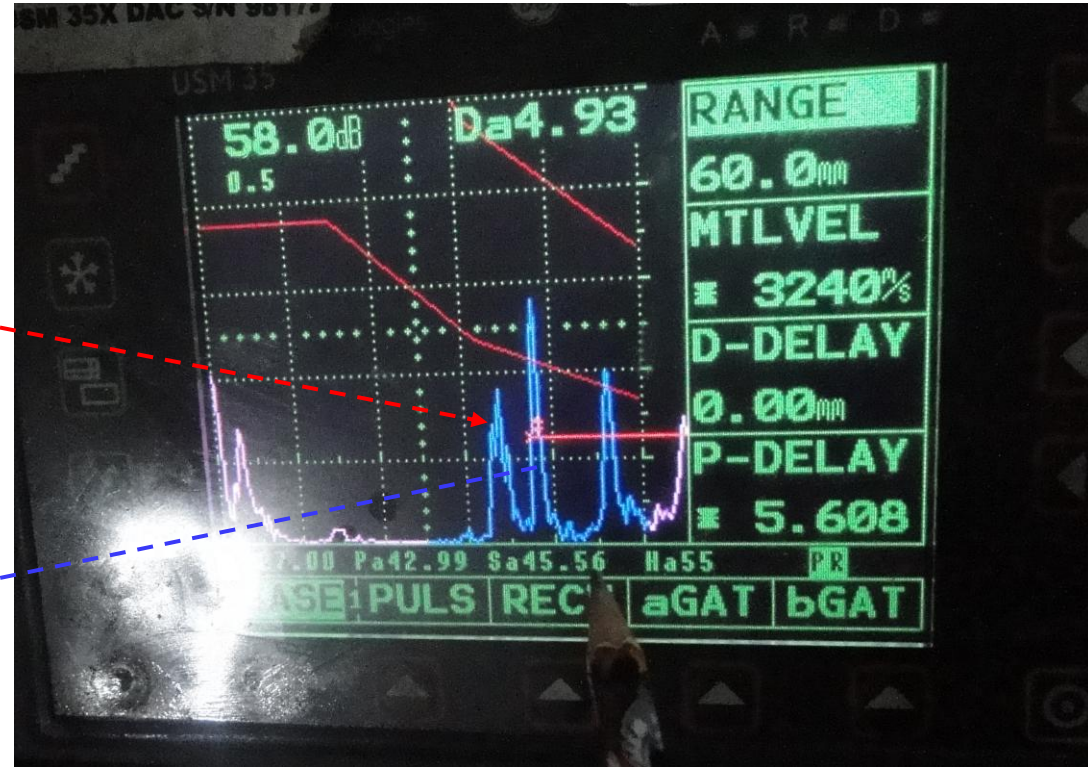
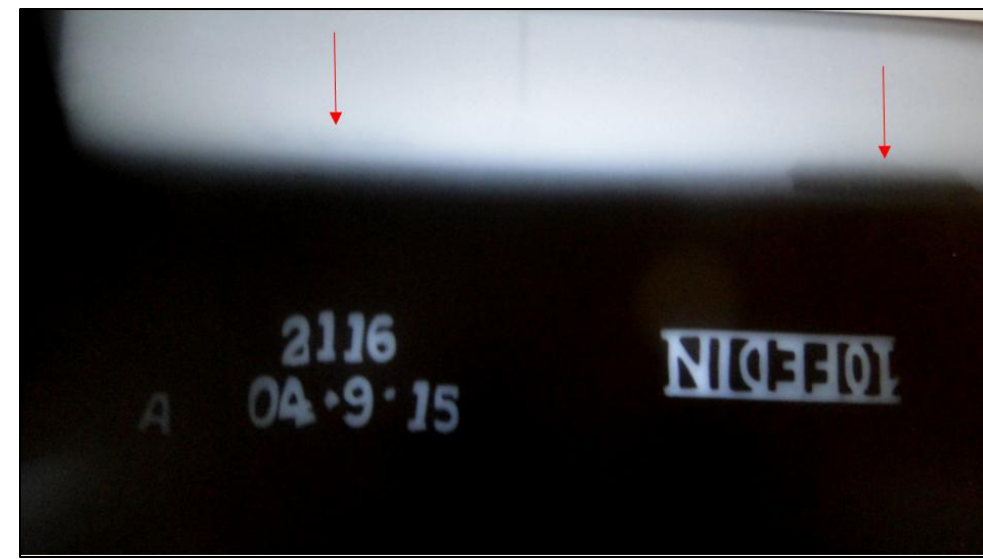
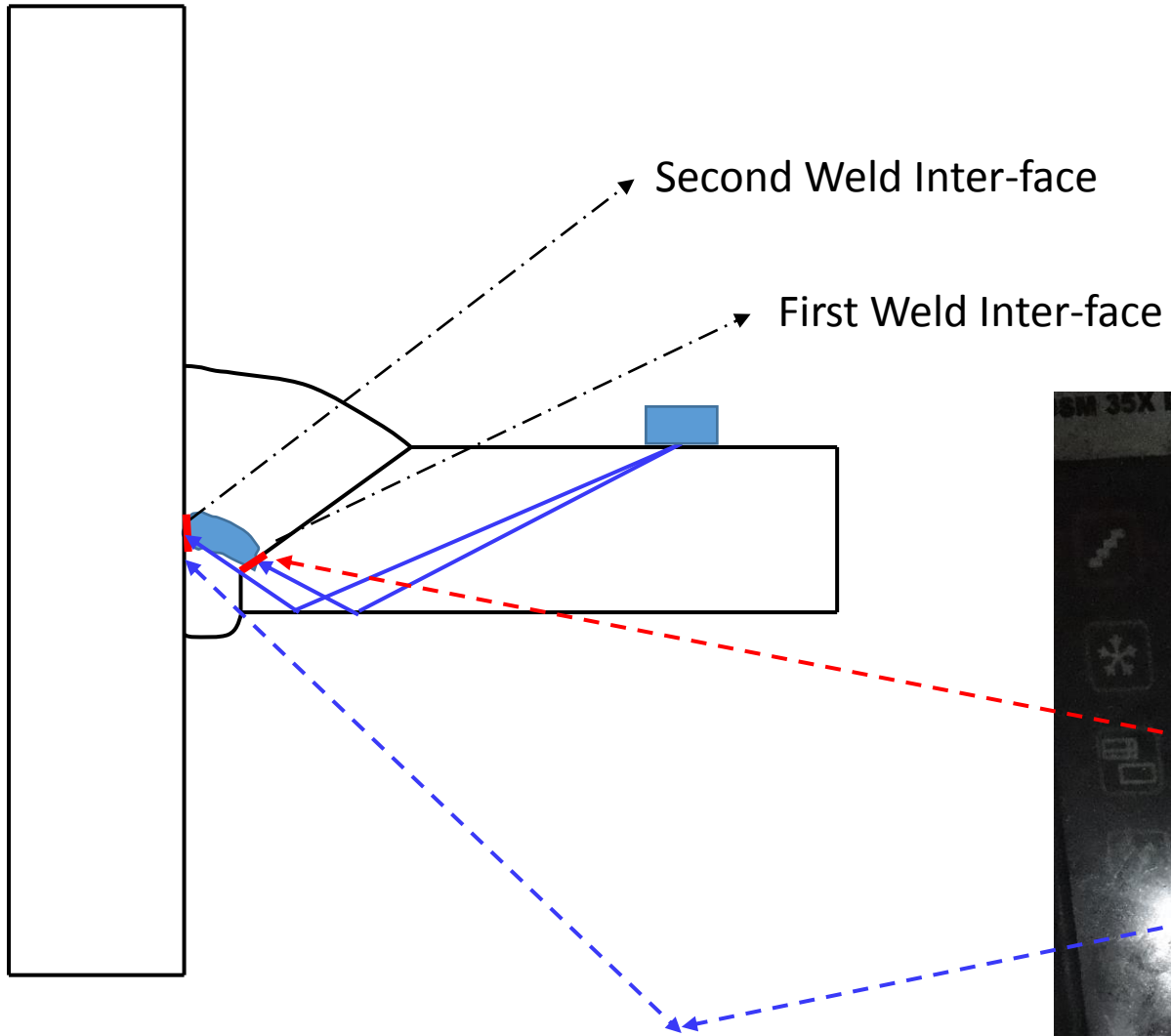
NDT Case Study



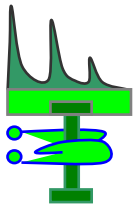
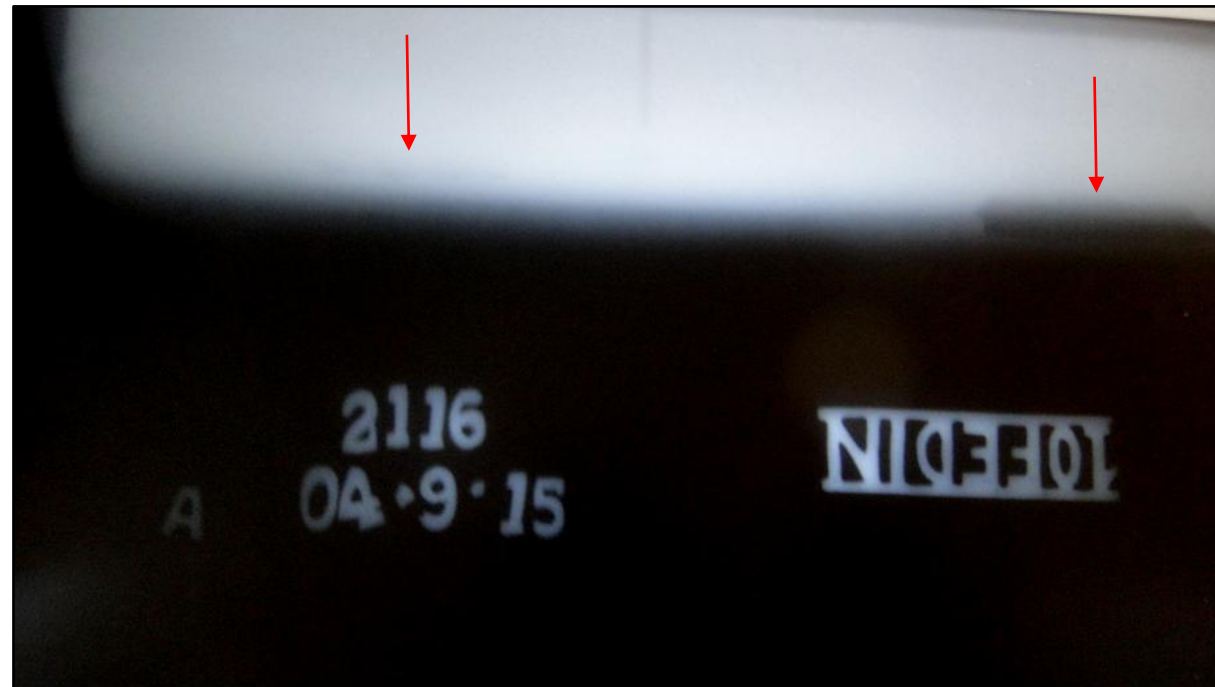
NDT Case Study



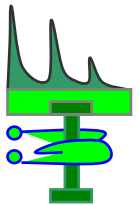
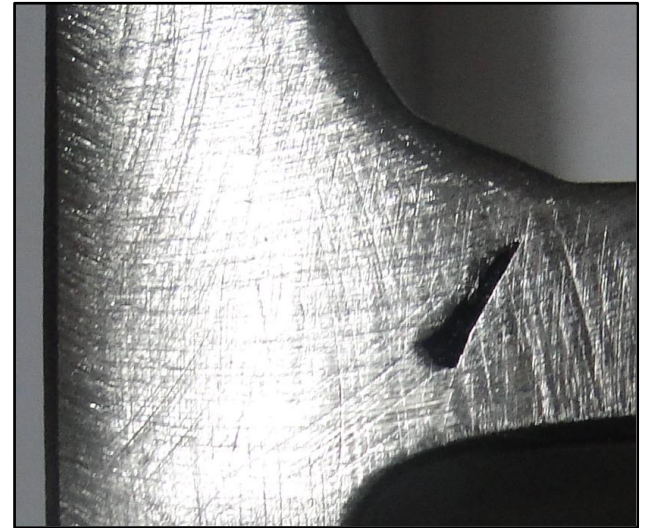
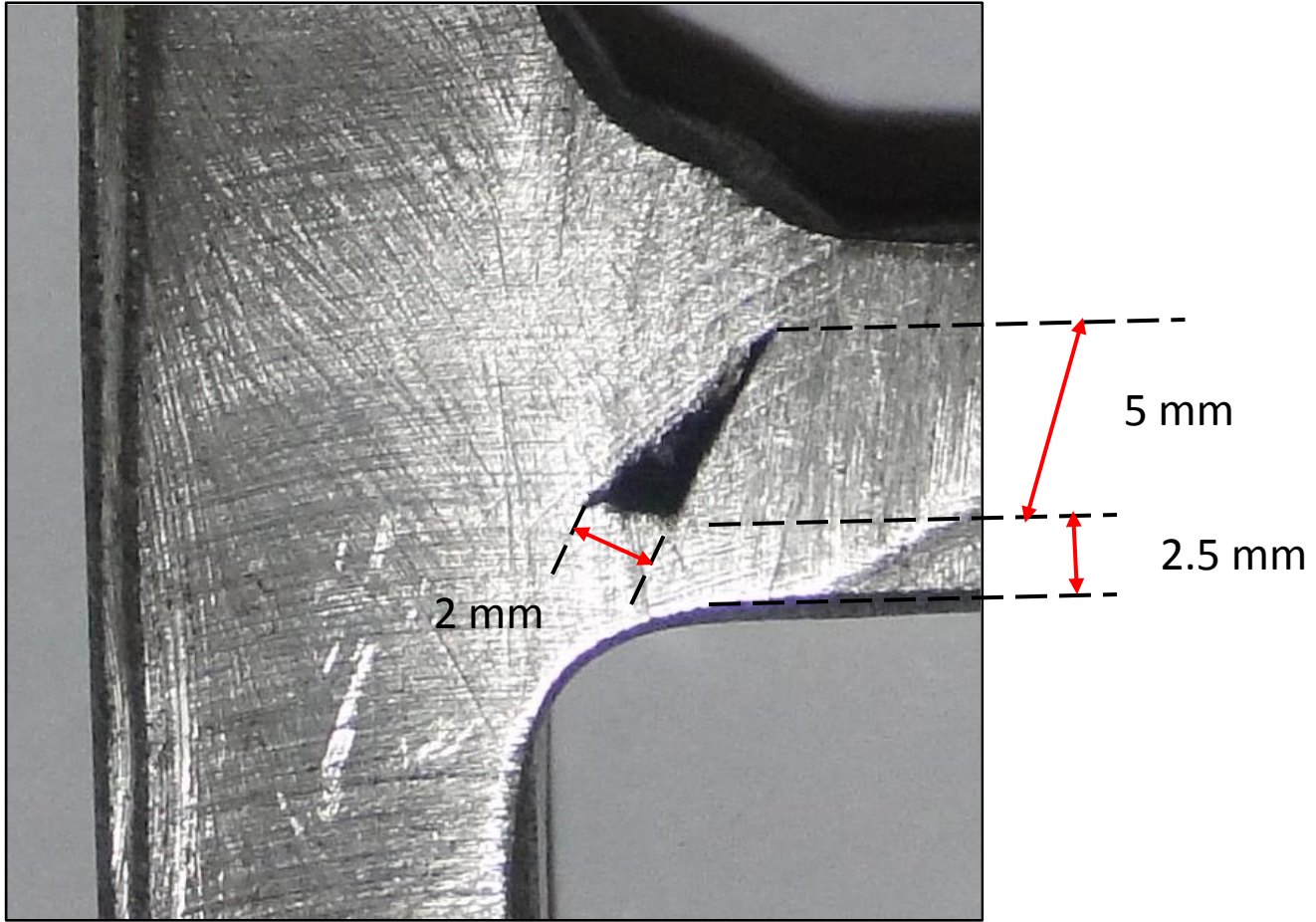
NDT Case Study



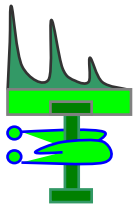
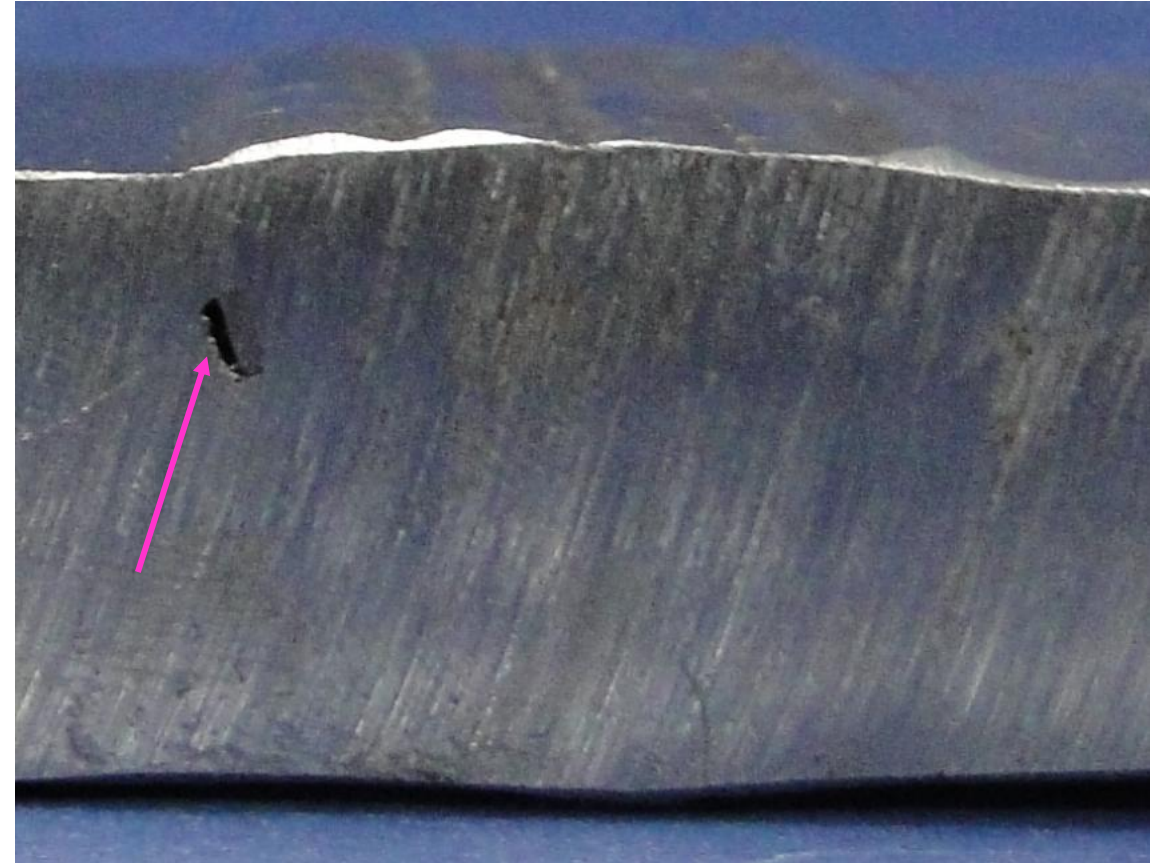
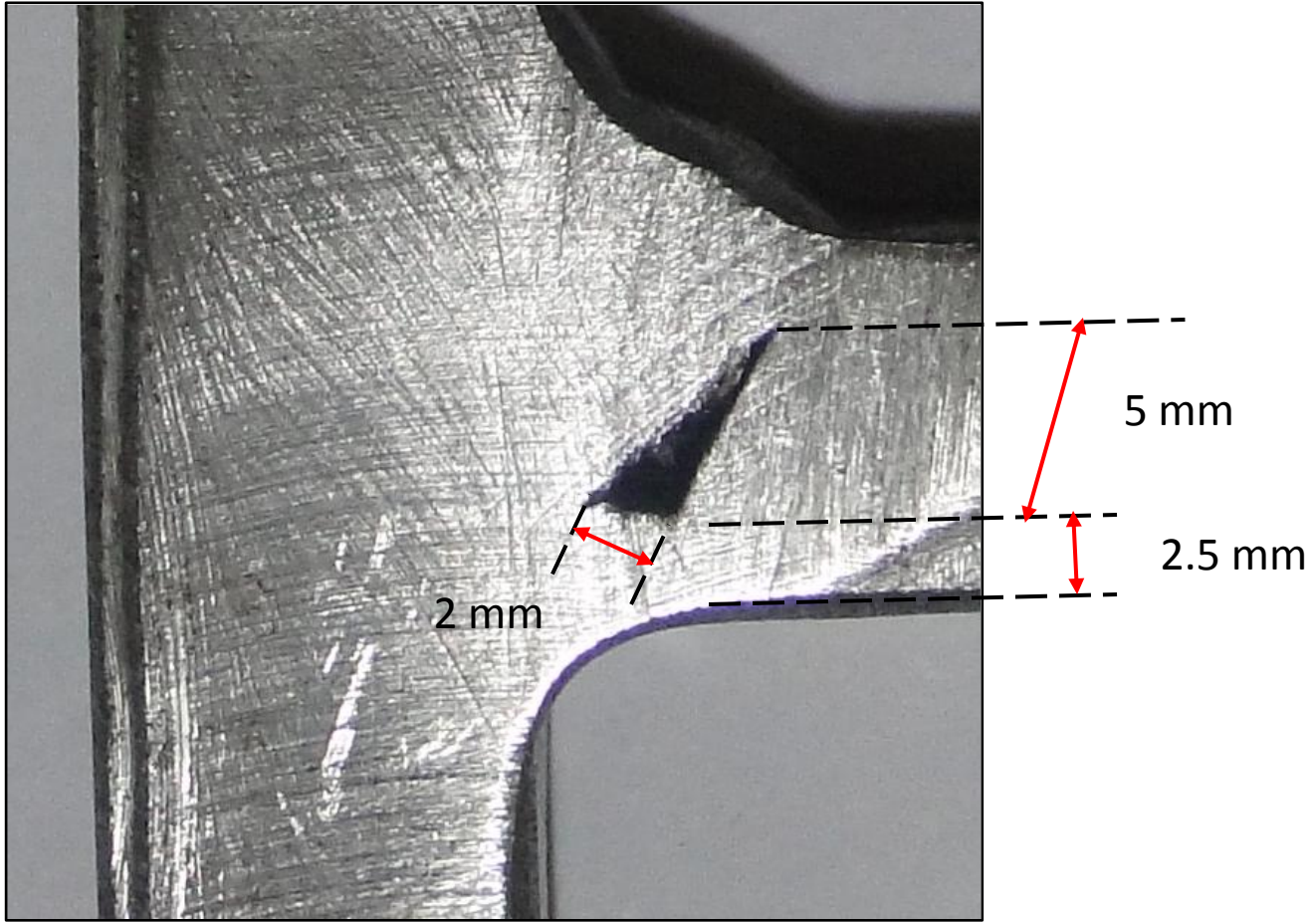
NDT Case Study



NDT Case Study

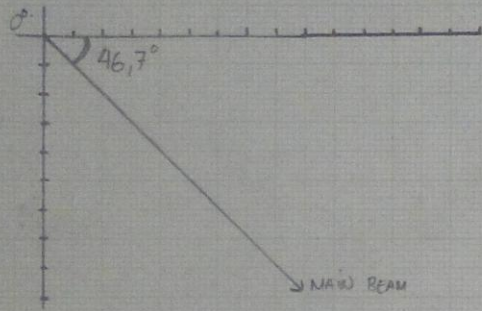


NDT Case Study

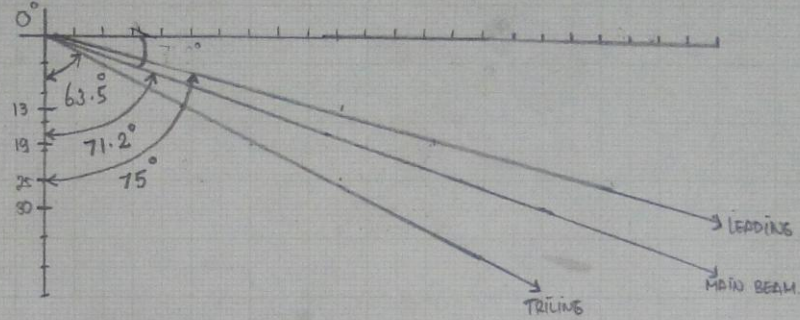


NDT Case Study

Probe θ 45°
 MODEL θ PHOENIX
 S/N θ P586

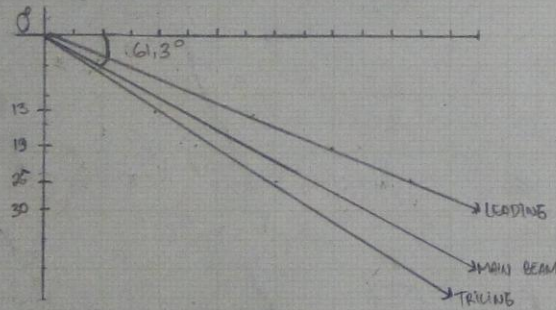


Probe θ 70°
 MODEL θ PHOENIX
 S/N θ M958

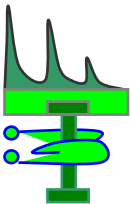


DA	LEADING	MAIN BEAM	TRILING
13	51,6	37,2	24,7
19	67,8	56,6	36
25	98	72,9	51
30	110,2	86,2	61,2

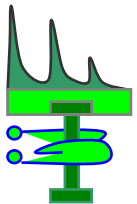
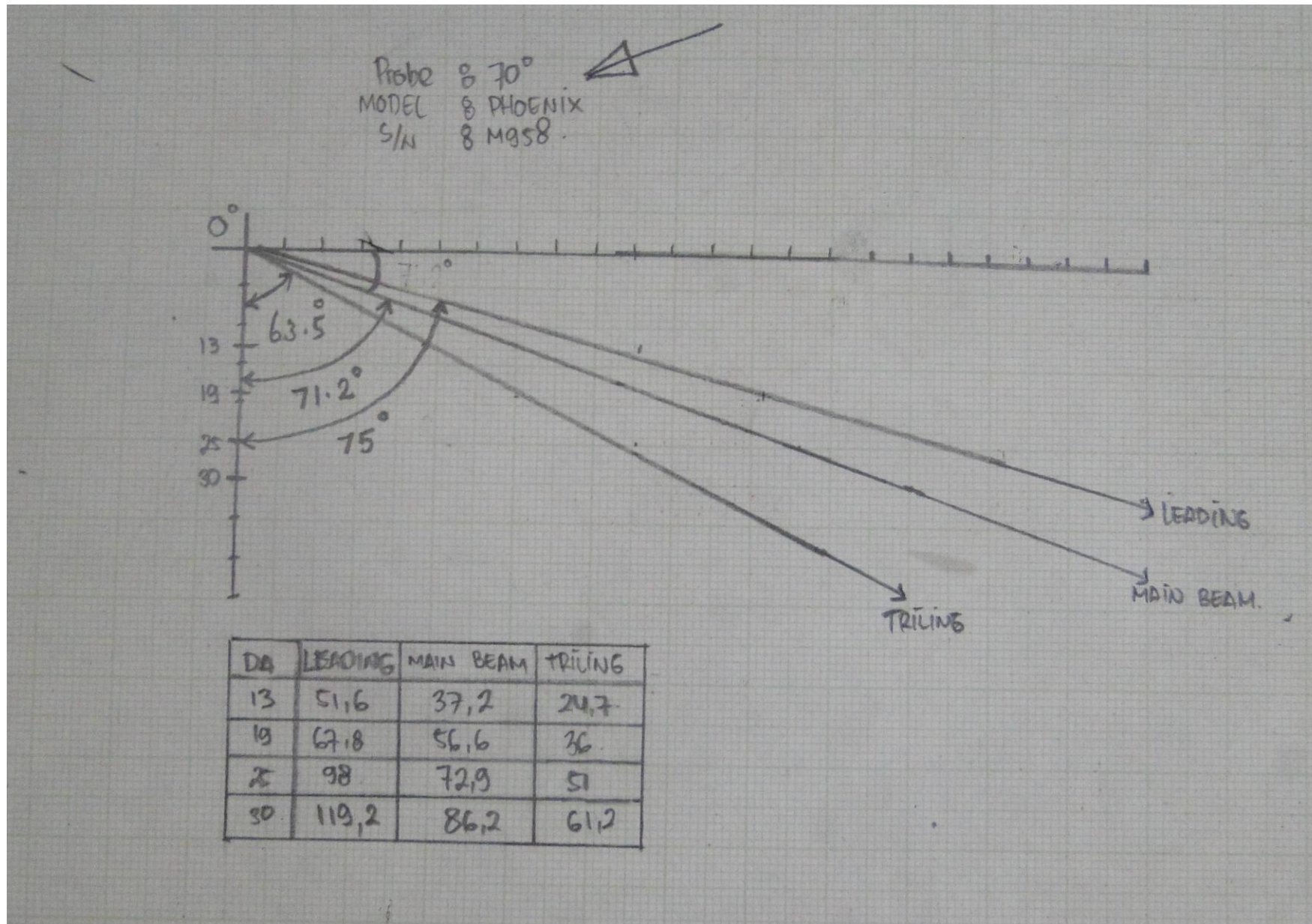
Probe θ 60°
 MODEL θ PHOENIX
 S/N θ D790



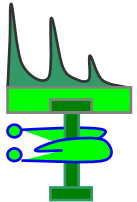
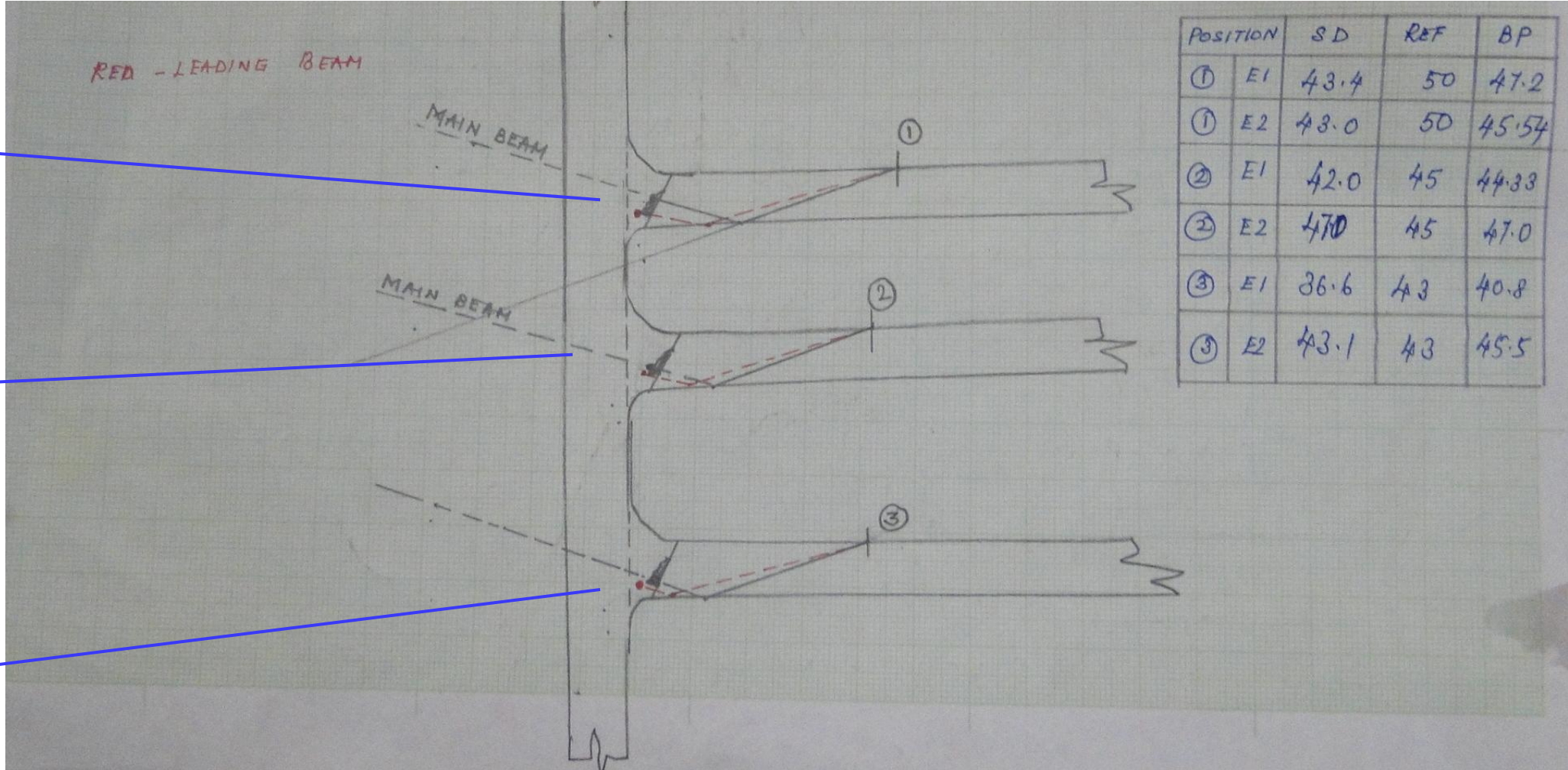
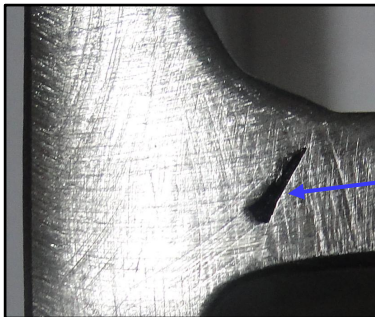
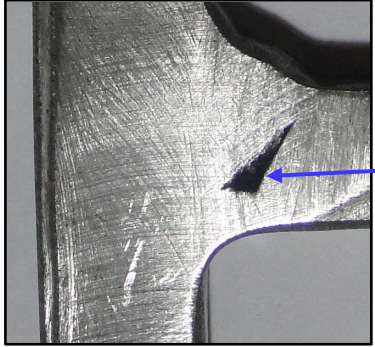
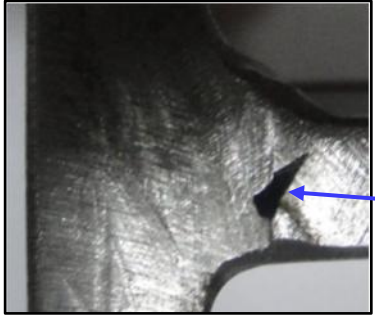
DA	LEADING	MAIN BEAM	TRILING
13	35,2	26,1	20,7
19	50	36,7	30
25	65,3	46,6	40,5
30	75,7	62,8	48,3



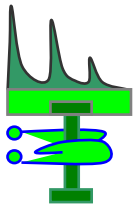
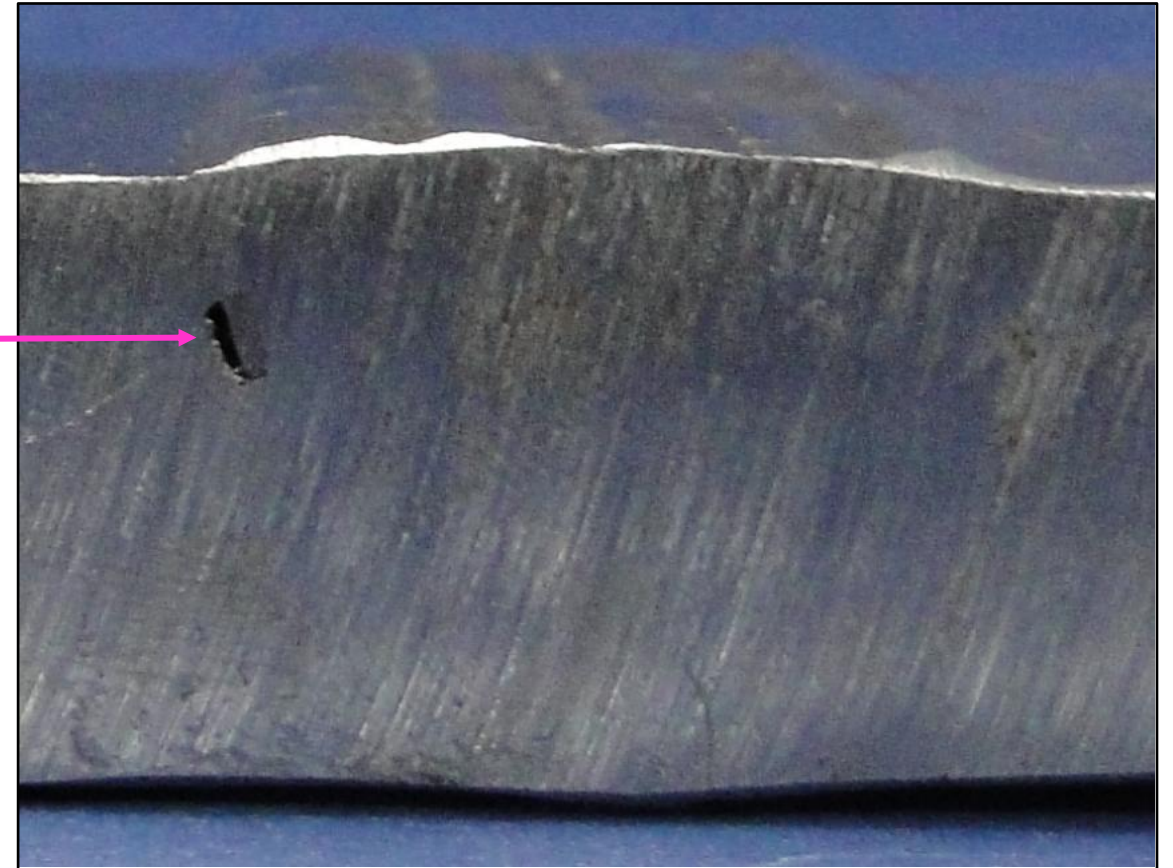
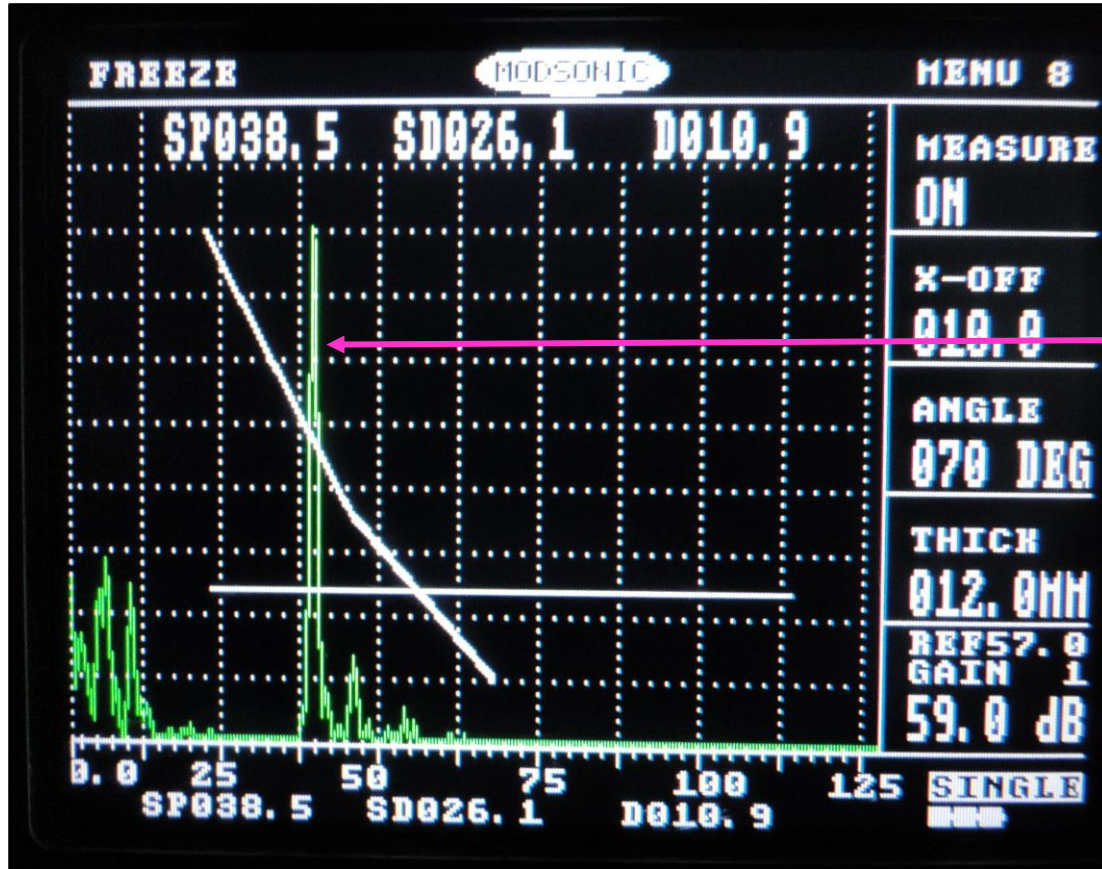
NDT Case Study



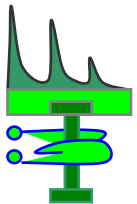
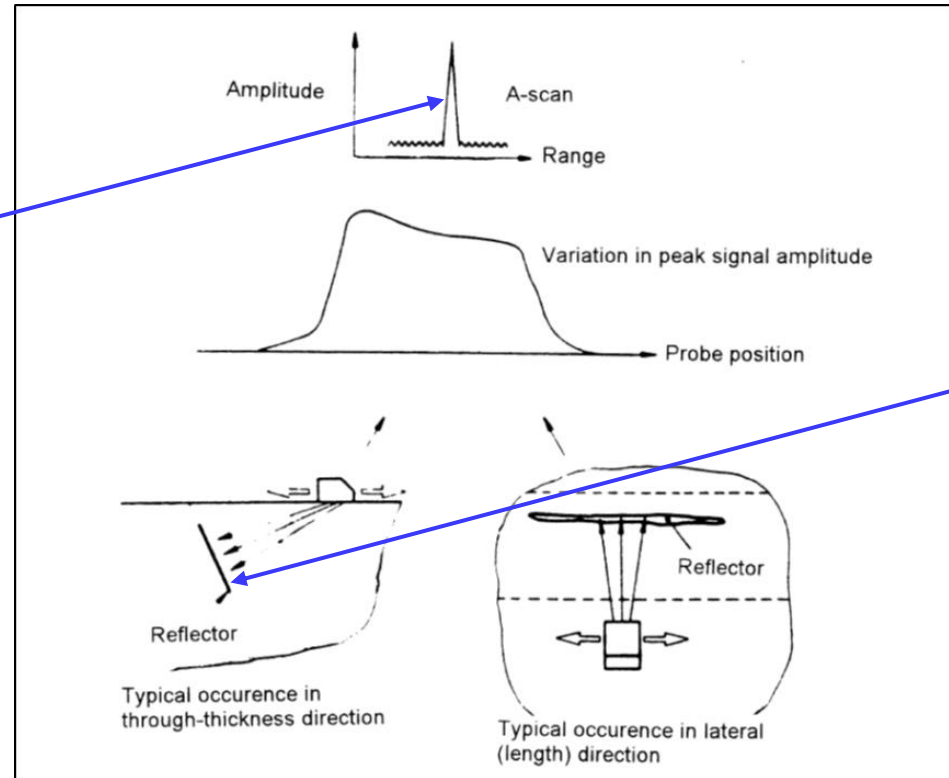
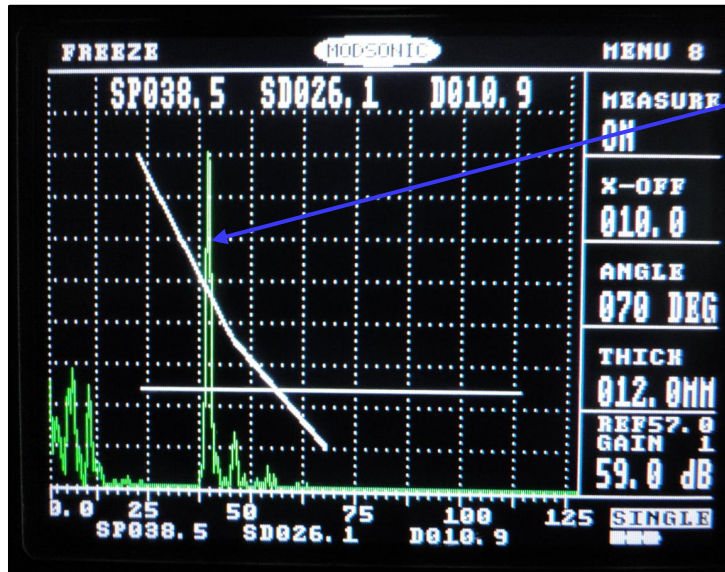
NDT Case Study



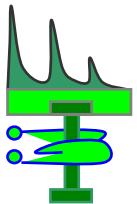
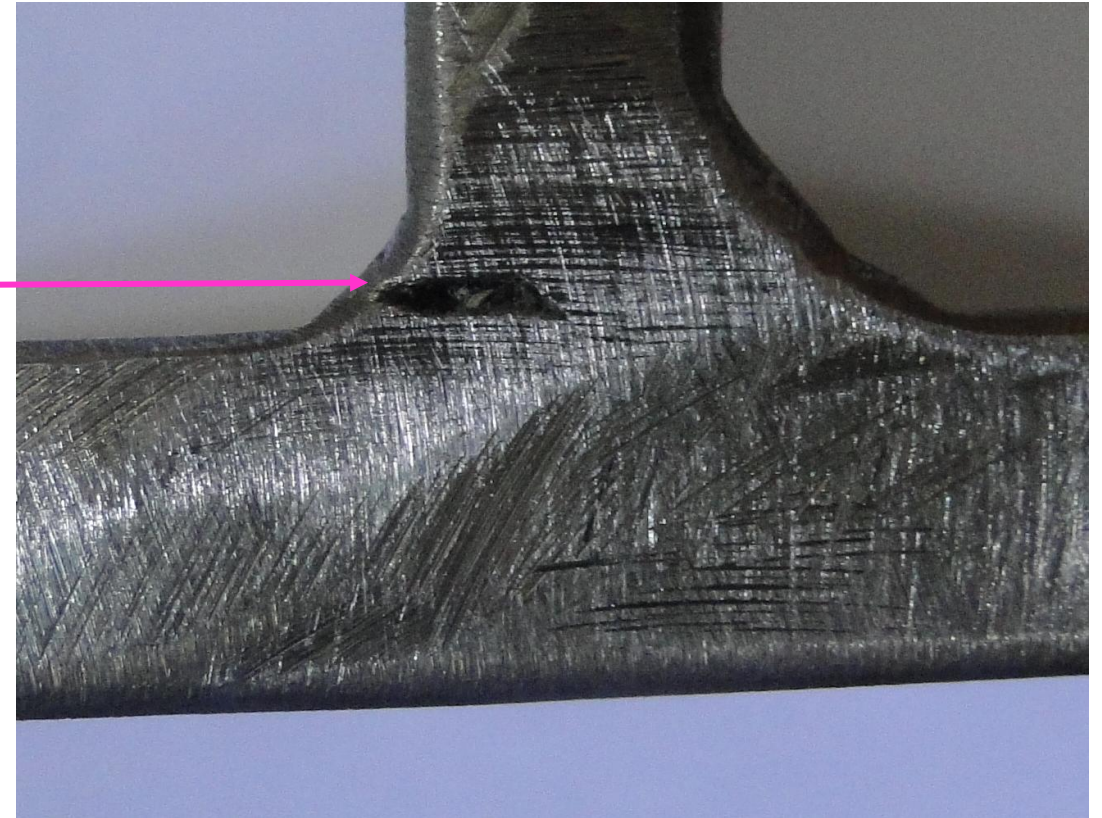
NDT Case Study



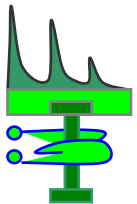
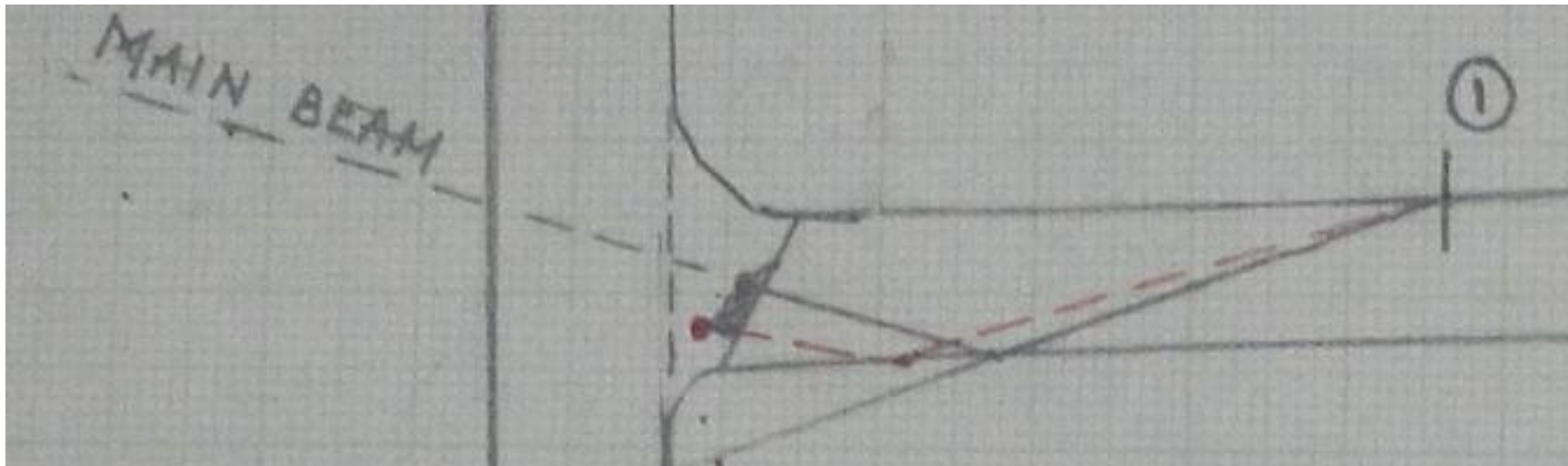
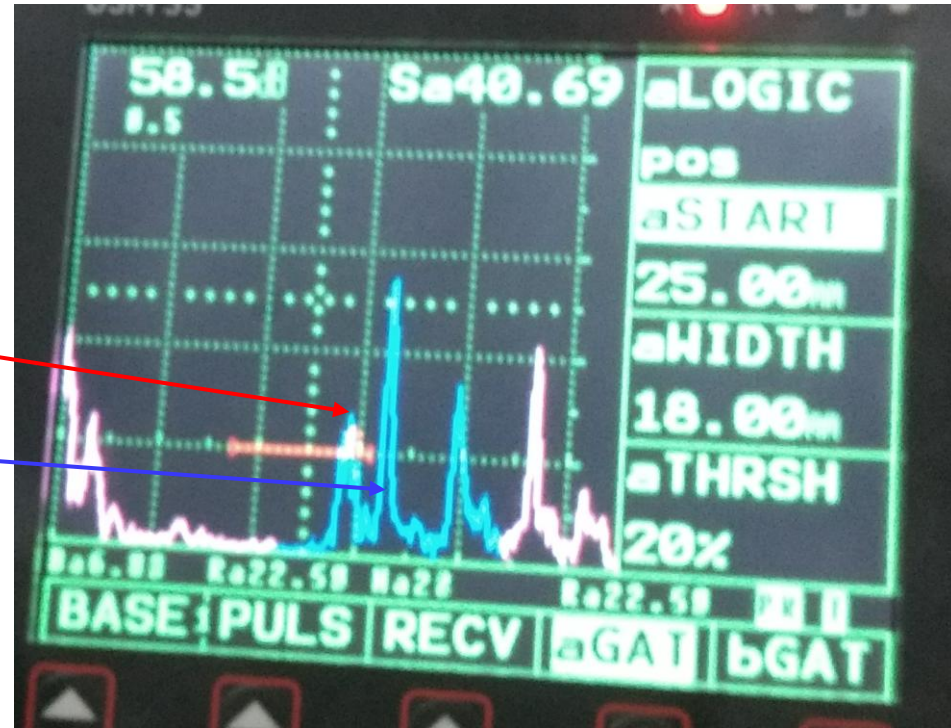
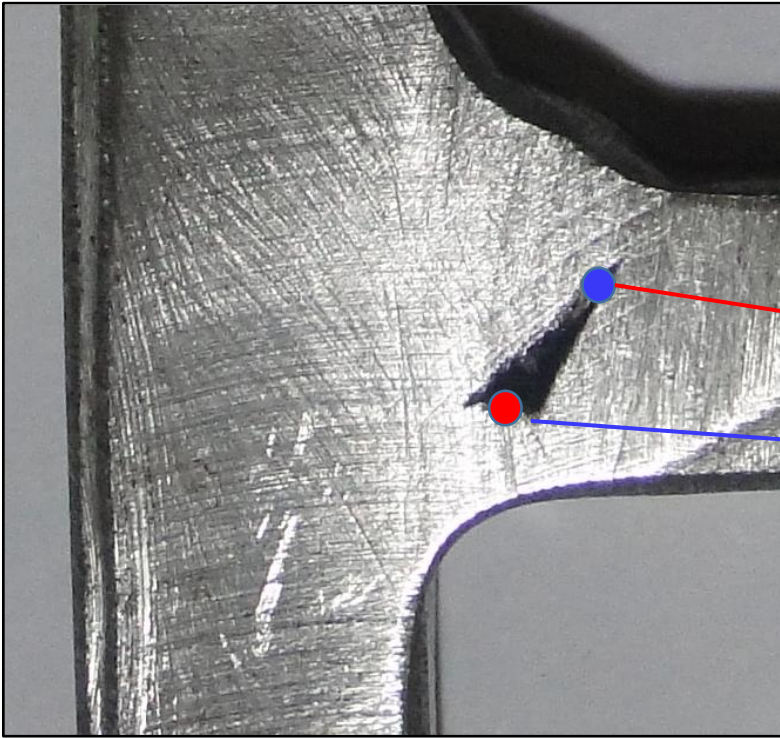
NDT Case Study



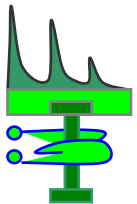
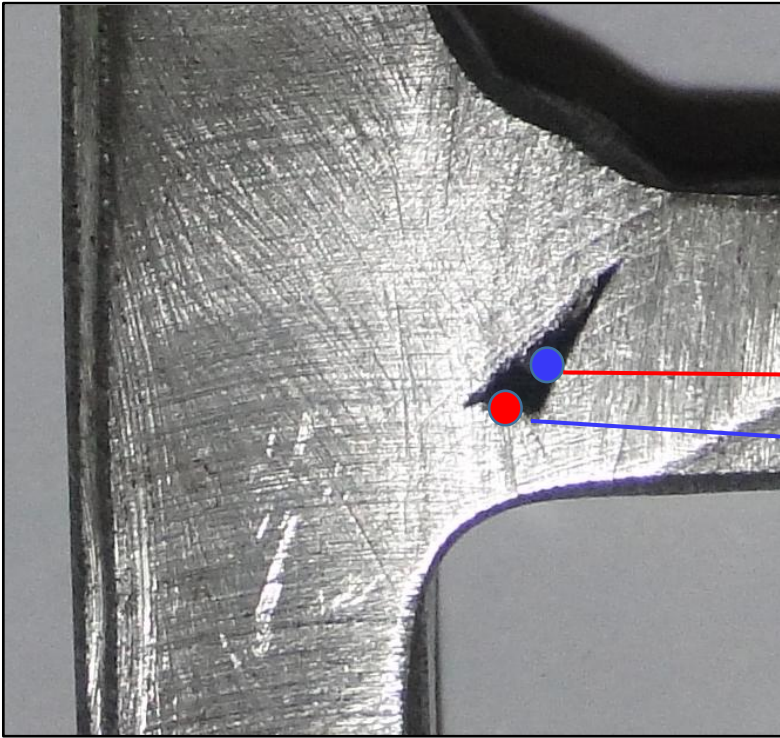
NDT Case Study



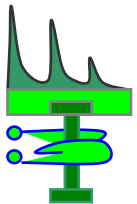
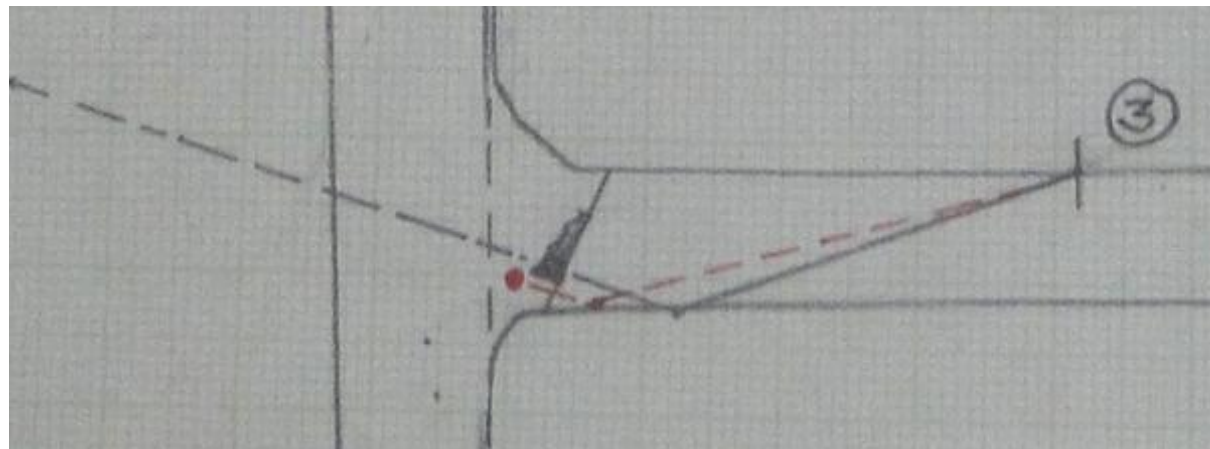
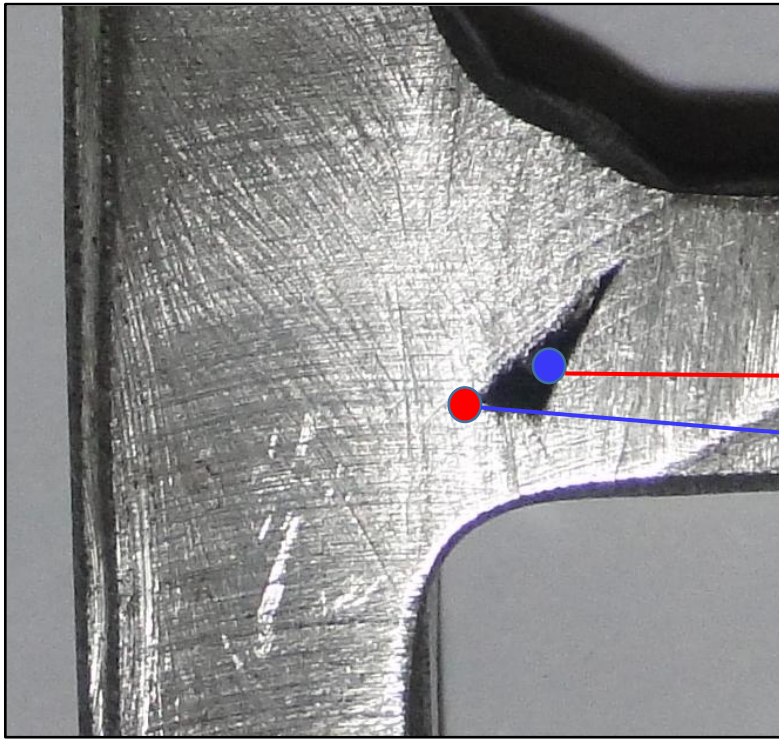
NDT Case Study



NDT Case Study



NDT Case Study



1. Defect Characteristic concept should be clearly understood,

- **Type of Defect**
- **Shape of Defects**
- **Location** of the defects expected
- **Orientation** of Defects
- Expected response from the **Reflectors**

2. Responsibility of NDT Level 2 and 3

- **Properly** Develop work Instruction / NDT procedure and **make sure** NDT operator understood

